

Journal of Ship Amulet. Amule

Boston to Columbo Isle of Ceylon.

2<sup>nd</sup> Commences with light southerly wind  
Could cloudy weather. Sounded at several  
different times in from 20<sup>to</sup> 30 fathoms.  
Ends with light baffling air & calm.

1847 Journal Ship Atmulet from  
Nov 19<sup>th</sup> at 10:30 A.M. left long wharf and hauled  
into the stream and anchored. got the  
crew on board and got ready for sea

20<sup>th</sup> at 8 A.M. got underway and proceeded  
to sea with all hands on board and  
a strong breeze from the Northward  
this day being but 12 hours long Ends  
My account of Civil time

Lat by Obs none  
Long " " "  
Barometer —  
Thermometer 42.

21<sup>st</sup>

First part the wind inclines to the  
NE with strong breezes & cloudy  
weather at 4 P.M. Cape Cod light House  
bore South Per Compass dist 5 Miles  
at 5 do the light bore 90° SW dist 10 M  
Lat Obs none  
Long no Obs —

Boston to Colombo Isle of Ceylon

22<sup>nd</sup> commences with light southerly air & cold cloudy weather Sounded at several different times in from 20 to 50 fathoms Ends with light baffling air & Calm

Lat by Obs None  
Long " " "  
Barometer 30.45  
Thermometer 54.

2 days out  
23<sup>rd</sup>

all this day light variable air and foggy Sounded at different times in 40 to 45 fathoms

Lat by Obs None  
Long " " "  
Barometer 30.45  
Thermometer 54.

3 days out

24<sup>th</sup> commences with brisk breezes from the South and foggy weather Middle & latter part brisk galls & passing clouds

Lat by Obs 41-48  
Long " " 83-26  
Barometer - 30.25  
Thermometer 66.  
Temp water 67.08

Ship Annulet from Boston towards

1847

Nov 25<sup>th</sup> Thanksgiving Day how different this day proves at sea

Commences with strong gales from the Southward and cloudy weather the Ship under double reefed topsails & courses latter part Moderate set single reefed topsails G'k & spanker

Lat by Obs 41-26

Long " " 61-01

Barometer 30-25

Therm " 66.0

5 days out

Temp water 57.6 68

26<sup>th</sup> Commences with Moderate gales from the Southward. Middle part wind inclines to SSW with heavy gales & cloudy weather double reefed topsails furled G'k & spanker latter part more Moderate set single reefed topsails

Lat by Obs 41-18

Long " " 57-37

Baromet 30-45

Therm " 68.0

Temp water 60.0

5 days out.

Colombo, Isle of Ceylon & Calcutta

1847

Nov 27<sup>th</sup> During these 24 hours strong gales from SSW and frequent rain squalls  
 One reefed the topsails reefed the main  
 sail. furled gill & spanker

Lat by Obs 40=57  
 Long " " 55=22  
 Barometer 30=15  
 Thermometer 66°

7 days out

28<sup>th</sup> All this day heavy gales & squally  
 weather reefed the fore sail

Lat by Obs 40=59  
 52=14  
 Long " " 49=47  
 Barometer 29=50

8 days out

29<sup>th</sup> at 1 P.M. the wind hauled suddenly to the  
 N.W. at 2 do. it cleared up, set all  
 sail

Lat by Obs now  
 Long " " "  
 Barometer 30=10

9 days out

Thermometer 60°

Ship Anulet from Boston towards

1847

Nov 30<sup>th</sup> Commenced with strong breezes from  
the N<sup>E</sup> and rainy Middle part calm  
 Latter part light air from the south  
 all sail set by the wind

No Obs

Lat by act  $39^{\circ}13'$  N

Long " "  $47^{\circ}10'$  W

Barometer  $29.90$

Thermometer  $65^{\circ}$

10 days out

Dec 1<sup>st</sup> Comes in with fresh southerly gales & cloudy  
weather Middle part heavy gales & squally  
close reefed topsails. furled Main sail  
7<sup>th</sup> spanker & mid topsail & reefed fore sail  
 Latter part the wind hauled round to  
N<sup>W</sup> set the mid topsail and  
whole fore sail & let one reef out topsails  
Wind N<sup>W</sup> or Course SE

Lat by Obs  $38^{\circ}10'$  N

Long " "  $44^{\circ}00'$

Barometer  $30.10$

Therm  $60^{\circ}$

11 days out



Colombo & Calcutta

1847  
Dec 2<sup>nd</sup>

Strong gales from the North & N.E  
throughout these 24 hours but the main  
topmast staysail all sail set the  
ship going about 9 knots

Lat by Obs 35° 57' N  
Long " " 41° 68' W  
Barometer 30.40  
Thermometer 62°

12 days out all well

13<sup>th</sup>

Commences with strong gales from the  
N.E & cloudy & a little rain the topsail  
middle part the wind inclines to  
the Eastward with heavy gales &  
squally close reefed the topsails

at 3 o'clock heavy gales from the S.E  
come to under close reefed main topsail

No Obs this Day Lat act 34° 53' N

Long " " 40° 52' W  
Barometer 30.30  
Therm 66°

13 days out every prospect  
of a long passage

Ship Anulet from Boston towards

1842  
Dec 4<sup>th</sup> continues strong SE gales Middle  
part more moderate set fore topsail  
& fore sail latter part latter part  
moderate gales and passing clouds  
made all sail by the wind

Lat by Obs 34-47 W  
Long " " 41-12 W  
Barometer 30-50  
Therm 70°

14 days out

Dec 5<sup>th</sup> During these 24 hours moderate  
SE breeze & pleasant weather all  
sail set by the wind

Lat by Obs 35-27 W  
Long " " 39-14  
Barometer 30-50  
Thermometer 69°

15 days out

Var Compass 15°

Dec 6<sup>th</sup> During these 24 hours light airs from  
the SE and approaching to a  
Calm a Bark to seaward standing  
ESE

Lat by Obs 36-24 W  
Long " " 37-55 W  
Barometer 30-50  
Thermometer 75°

Var Comp 15°

# Colombo & Calcutta

<sup>1847</sup>  
Dec 7<sup>th</sup> Throughout this Day light airs from the Southward & Eastward and pleasant with occasional puffy clouds.

Unbent foretop sail & fore sail & bent new ones

Lat by Obs  $37^{\circ} 00' N$

Long " "  $36^{\circ} 14' W$

Barometer  $30.60$

17 days out Therm  $56^{\circ}$

Dec 8<sup>th</sup> Commences with moderate breezes from the Southward. Middle part the wind gradually hauled into the S W with fine breezes and pleasant weather

Lat by Obs  $36^{\circ} 18' N$

Long " "  $33^{\circ} 40' W$

Barometer  $30.35$

Therm  $58^{\circ}$

Var  $22^{\circ}$

<sup>1847</sup>  
9<sup>th</sup> Dec Begins with light southerly breezes & rain Middle part heavy gales & squally close reef of topsails & furl & main sail

Latter part the wind hauled to the west

Made all sail Lat by Obs  $34^{\circ} 39' N$

Long " "  $31^{\circ} 27' W$

Barometer  $30.40$

19 days out Thermometer  $58^{\circ}$

Ship Anulet from Boston towards

1847

11<sup>th</sup> The Commences with strong westerly breezes  
& pleasant weather Middle part the  
wind hauled into the N<sup>W</sup> with heavy  
rain Ends with fine Breezes from the N<sup>E</sup>  
& pleasant weather

Lat by Obs 32-12

Long " " 29-24

Barometer 30-35

Therm<sup>o</sup> 68.

20 days out

11<sup>th</sup> During these 24 hours moderate gales  
from the N<sup>E</sup> & pleasant

Lat by Obs 28-42

Long " " 28-32

Barometer 30-30

Thermometer 69.

12<sup>th</sup> Fresh N<sup>W</sup> gales and fine pleasant weather  
throughout these 24 hours

Lat by Obs 25-18 N

Long " " 28-08 W

Barometer 30-10

Therm 70.

22 days out

Colombo, Isle Ceylon & Calcutta

1847

13<sup>th</sup> Dec Throughout these 24 hours fresh N.E. trades  
and fine weather, raised fore & main royal  
yards set topmast & lower standing sails

Lat by Obs 22-42 W

Long " " 27-30 W

Barometer 32-10

Thermometer 72°

23 days from Boston  
14<sup>th</sup>

During this day fresh breezes & pleasant  
weather

Lat by Obs 19-38 N

Long " " 27-00 W

Barometer 30-15

Therm. 75°

15<sup>th</sup> Strong N.E. trades and fine weather  
all drawing sail set at day light  
Made the Island of St Antonio's  
Cape de Verde bearing S.E. by E per  
Compass at 9-30 A.M. it bore East  
dist 35 Miles by the chronometer

Lat by Obs 16-41 N

Long " " 25-52 W

Baromet 30-20

Thermometer 70°

25 days from Boston

Ship Amulet from Boston towards

1847

16<sup>th</sup> Dec During these 24 hours fresh trades  
& squally

Lat by Obs 13-37 N

Long " " 23-38 W

Barometer 30-10

Thermo 76

17<sup>th</sup>

26 days out

Throughout these 24 hours strong  
trades from ENE to East  
At Ship in Comp steering South

Lat by Obs 10-17

Long " " 24-34

Barometer 30-05

Thermometer 78

18<sup>th</sup>

Strong trades and pleasant  
weather throughout these 24 hours

Lat by Obs 7-19 N

Long " " 23-40 W

Barometer 30-00

Thermometer 84

# Colombo & Calcutta

1847

19<sup>th</sup> Dec commences with light breezes from NE to East Middle part passing showers Latter part the wind inclines to SE with frequent rain squalls No Obs this Day

Lat by alt 4=44 N

Long " " 23=40

Barometer 30=10

Thermometer 78°

20<sup>th</sup> Throughout these 24 hours light breezes and passing clouds I think we have struck the SE trades wind So by S heading SW to SW by S for the last two days I have experienced a current setting SE 12 miles per 24 hours

Lat by Obs 3=16 North

Long " " 23=30 West

Barometer 29=95

Thermometer 82°

30 days from Boston I was in hopes to have cross the line in 30 days but it was ordered otherwise

Ship Amulet from Boston towards

Tuesday Decem<sup>r</sup> 21<sup>st</sup> / 47

Commenced with light breezes from the  
SE to SSE and peeping clouds Middle  
part light breezes and pleasant weather  
at 10 AM wind hauled South  
have not experienced any current this  
24 hours Sailed S 24.90 miles distant

Lat by Obs 1-58.00

Long " 24-40

Barometer 29.90

Thermometer 81°

31 days out

var Comp 11'



# Colombo (Isle Ceylon) & Calcutta

Wednesday 22<sup>nd</sup> Dec 1847.

Low mucus with light breezes from the South and passing clouds. at 1 P.M. tacked to E by S.

Middle part frequent light showers of rain but not enough to make any haul of catching water for Ships. use. at 4 P.M. saw a vessel steering to Northward but could not make her out it being dark.

Latter part light breezes & passing clouds the Ship averaging 5 knots. I think I was wrong in saying we struck the S.E. trades on Monday for we have since had the wind from South most of the time. at 12 Noon tacked to S.W. by W. no Current this Day

	Lat. by Obs.	2-22.04
	Long. by Obs.	73-29.74
	Barometer	29.90
	Thermometer	81-1/2
32 days out	varit Compass	14.

Ship Anulet from Boston towards

Thursday 23<sup>d</sup> Jan 1847.

Commences with light breezes from  
the Southward and pleasant. the  
ship going 3 knots.

Middle part brisk breezes &  
puffy clouds with frequent  
light showers of rain. Anulet  
going from 6 to 7 knots by the wind  
heaving from S W by W to W S W  
latter part the wind inclines to  
be more favourable comes up  
S W and I am very glad of it  
for I am afraid of falling in with  
the Rogue Coast to leeward. I  
shall stand on outside lounge  
hoping the wind will continue  
in our favour

33 days out

Lat by Obs	0° 51' N
Long "	25° 07' W
Barometer	29.90
Thermometer	80°
var. Comp	11°

Colombo (Cape Ceylon) and Calcutta

Friday 24<sup>th</sup> Dec 1847

All this day gentle breeze & passing clouds. Ship going 5 1/2 knots from S 20 by W to N 20 by S making S 20 3/4 S Course true. Crossed the Equator at 12 Mid Night in long 26-10 West about 2 degrees farther west than I intended to have gone had the wind been favourable. but it is too late now to grumble at what can't be helped have not experienced any current this 24 hours

Lat by Obs	0-5-50
Long by Obs	26-29 W
Barometer	29-96
Thermometer	80

34 Days from Boston

# Ship Amulet from Boston

Saturday 25<sup>th</sup> Dec 1847

All this day gentle breeze from S E  
Ship going 5 knots heading from  
S S W to W to S W have not experienced  
any current this 24 hours

Lat by Obs 2-51 S

Long by Obs 29-26 W

Barometer 29-90

Thermometer 78

Heat of water 73

Sunday 26<sup>th</sup> Dec 1847

Commenced with light breeze  
& passing clouds Middle part  
light breeze & pleasant  
 Latter part light breeze & favourable  
at 4-30 the wind in breeze to E S heard  
Ship heading S S W going 5 knots  
at 10 A.M. wind E S E and  
pleasant Experience no current

Lat Obs 4-51 S

Long Obs 29-30

Barometer 29-90

Thermometer 79

var. Comp 11

36<sup>th</sup> Days Out

towards Colombo & Calcutta

Monday 27<sup>th</sup> Dec 1847

Commences with light breezes  
and pleasant at 4 P.M. the wind  
inclines to the Southward Ship  
heading from S by W  $1/2$  W to S  $1/4$  S  
through the night, at 5 A.M.  
the wind inclines to Eastward  
again Ship heading from South  
to S by W averaging from 5  $1/2$  to 6  
knots throughout these 24 hours  
at 6-30 A.M. exchanged signals  
with a Danish Schooner steering  
North. Experience no current  
37 Days out

Lat by Obs 7-06 S

Long by Obs 29-04 W

Barometer 29-90

Thermometer 81°

Bar Comp 11° West

Set fore & Main topmast standing  
sails top gallant stunsails staysails  
& c. Hoping that as we have  
got so far South the wind  
will continue favourable

# Journal Amulet from Boston

Tuesday 28<sup>th</sup> Dec 1847

Commences with light breezes & pleasant weather at 6 PM the wind SE with strong breezes & passing clouds and continues so throughout the day. a heavy swell from the SE Amulet going 4 knots by the wind with topgallants set and plunging at a great rate and wetting every thing fore and aft the decks

Let Obs 9-485

Long Obs 29-35

Barometer 29-95

38 days from Boston Thermometer 80

near Camp 11° Heat

towards Seylon & Calcutta

Wednesday 29<sup>th</sup> Dec 1847

All this strong breezes and  
piping clouds going from  
7<sup>1</sup>/<sub>2</sub> to 8 knots on S S W course

Lat Obs 12=35 S

Long " 30=30 W

39 = Days out

Barometer 30=50<sup>25</sup>

Thermometer 80°

Thursday 30<sup>th</sup> Dec 1847

All this day strong breezes from the  
S E and pleasant weather

variable going from 7 to 8 knots by  
the wind heading from South  
to S by W.

Lat by Obs 15=15 N

Long " " 31=03 W

Barometer 30=05-

Thermometer 80°

var Comp 4° W

46 days out

Journal Amulet from Boston

Friday 31<sup>st</sup> Dec 1847

Commenced with brisk breeze from  
the S.E. & pleasant weather at 12

Midnight the wind inclines to

the Eastward set topmast & top g't

Studding sails fore & aft sailed to

Day 142 S  $3/4$  W course Ende with the

light breeze from E.S.E. & fine

weather

Lat by Obs 17.36 S

Long by Obs 31.22 W

Barometer 30.84

Thermometer 81



towards Ceylon & Calcutta

Saturday 1<sup>st</sup> June 1845

Our run was with light breezes from  
the S.E. and pleasant. At 6 at M  
light airs varying from N.E. to S.E.  
and frequent light showers of rain  
at 9 at light breezes from N.E. & pleasant  
Ends Calm & very hot weather.

Lat by Obs 19° 33' N

Long " " 31-11 W

Barometer 30

Thermometer 83

var Compas 5° west

42 days from Boston

Ship Anulet from Boston

Sunday 2<sup>nd</sup> Jan 1848  
Commenced calm at 2 P.M.  
a light breeze sprung up from  
N.E. set all drawing sail &  
steered South. at 12 Midnight  
passed 100 Miles west of  
Trinidad & Martin was  
made with gentle breeze from  
N.E. to North & pleasant  
at 4 A.M. steered by ~~N.E.~~

Lat by Obs 21-47 S  
Long " " 30-28 W  
Barometer 29.95  
Thermometer 82°

43 days out

Var Comp 5' west

towards Bexlor & Calcutta

Monday 3<sup>d</sup> Jan 1848  
began we were with gentle  
breezes from the North &  
passing clouds Middle part  
variable winds & weather  
Latter part Calm with  
frequent showers filled  
about 500 galls water  
Ends with light breezes  
from the South & rainy  
W. A. Also this Day

Barometer 29.94  
Therm 75

# Ship Anulet from Boston

Tuesday 4<sup>th</sup> Jan 1847.

Commenced with light breezes  
from the South and rising  
weather at 8 PM strong gales.  
furled topgallant sails &  
double reefed top sails at 12  
Midnight wore ship to S.W.  
at 4 AM wore to E.S.E. and  
made all sail by the wind  
the weather having cleared  
saw a ship at 12 about 10  
miles off the lee bow apparently  
standing to the Northward  
Envo with light breezes from  
the Southward & a heavy swell  
very unfavourable wind for  
us made

4<sup>th</sup> King Chief

Lat by Obs 23-22  
Long " " 28-39 W  
Barometer 30  
Thermometer 75

towards Ceylon & Calcutta

Wednesday 5<sup>th</sup> Jan 1848  
all this day light variable  
wind & Calm sailed only 20  
miles on E. S. Course there  
has been throughout the  
day a heavy swell from the  
S. S. W. bent the O. C.  
Sails & Courses. after  
heaving them thoroughly  
up & down I think they ought  
to stand a good while. this  
is very bad weather for us and  
is lengthning our passage  
very much. but there is appearance  
of a wind from the S. W. so  
I will not growl as long as  
there is any prospect of fair  
passage but it is very trying  
to my patience and I don't  
think I shd. was any relation  
of mine

40 Days put

Lat by Obs	29-35-0
Long " "	27-57-20
Barometer	30-05
Thermometer	79°

Ship Annulet from Boston towards

Thursday 5<sup>th</sup> Jan 1848  
Commenced with light baffling air  
and pleasant weather. Middle part  
the wind gradually inclined to  
the SE with light breezes and a  
heavy swell from the South  
Ends with light breezes from  
the SE & fine weather. Sailed  
at Bark standing to Northward

Lat by Obs 24:22 S  
Long " " 28:29 W  
Barometer 31  
Thermometer 77

Wind Comp N. point W

Friday 7<sup>th</sup> Jan  
all this day light breezes from the  
ESE and pleasant weather all  
drumming sail set

Lat by Obs 26:30 S  
Long " " 28:07 W  
Barometer 31=3  
Therm 78

48 days out

## Colombo & Calcutta

Saturday 8<sup>th</sup> Jan 1848

Commences with light breezes from the N.E. and pleasant weather Middle part much the same the breeze gradually freshening at 2 P.M. there came up a squall from the N.W. which deluged us with rain. and continued until 3:30 do without much wind but we took in all the standing sails and light sails not knowing what we were going to have. at 4 do it cleared off when we set all sail again. the wind having hauled to the N.E. a fine breeze & pleasant weather and continues so throughout the day. Lat by Obs 28-29, & Long by Obs 29-24. W. Barometer 30-10 Thermometer 78° War Comg 9° about.  
49 days from Boston

Amulet from Boston towards

Sunday 9<sup>th</sup> Jan 1848

All this day gentle breezes  
from North to NE and  
fine weather running SE with  
all sail set Lat by Obs 30-32 L  
Long by chronometer No 491. Lathland  
Daniels & Co Liverpool 25-48 Heat  
Barometer 30-15 Thermometer 58°  
var Comp 1°  
50 days out

Monday 10<sup>th</sup> Jan

All this day gentle Breezes  
from the N W and pleasant  
all sail set steering SE by E  
Lat by Obs 31-28 Long by Obs 23-36  
Barometer 30-10 Thermometer 80  
var Comp 8° about 5-1 days out



# Colombo & Calcutta

Tuesday 11<sup>th</sup> January 1847  
Commences with light airs from N.W.  
and pleasant weather. Middle  
part appearance of a change  
cloudy skies and Barometer falls  
latter part raining steering S.E. by E  
No Obs this day Barometer 30.02  
Thermometer 78° var Comp about one  
Port. 52 days out

Wednesday 12<sup>th</sup> Jan 1847  
All this day light variable airs  
from N.W. to West and frequent  
rain squalls steer S.E. by E  
Lat by Obs 32° 40' Long by Obs 20° 01' W  
Barometer 30.02 Thermometer 78°  
53 days out

Journal Amulet from Boston

Thursday 13<sup>th</sup> Jan 1847.

Commences with light airs from  
NW and cloudy at 4 P.M. the  
wind suddenly hauled to the SSE  
through the night frequent rain  
squalls at 4 A.M. Calm with a  
heavy smell from the S  
at 10 etc light baffling winds  
from NW to SE and pleasant  
weather saw two Cape hens for  
the first time there is a pair in  
sight bearing SE but can not  
make her out. Lat by Obs 32-33. L  
Long by Chronometer 14-35. W. Baromet 31-15-  
Thermometer 40<sup>o</sup> near Camp 11.  
54 days out from Boston.

towards Colombo and Calcutta

Friday 14<sup>th</sup> Jan 1848.

Commenced with light airs from the westward and pleasant weather. at 1 P.M. Calm at 9 do light breezes from the N.W. to N.N.W. set all the larboard studding sails. the starboard ones being set before. at 4 A.M. fine breezes and passing clouds going from 5 to 6 knots. steering S.E. by E. by Comp. I mistrust there is more than 11° variation for we have made S.E. by E.  $\frac{3}{4}$  E. Course and there is no appearance of a Current the Barometer is falling gradually at 12 Noon standing on 29.96. Ends with brisk breezes and passing clouds going 6 to 7 knots Lat (Obs) 33-05.  $\frac{1}{2}$  Long by chronometer 16-56 West Thermometer 77 at Noon.

5.5 days out

I will here observe that the Barometer rises and falls from 5 to  $\frac{10}{11}$  <sup>lines</sup> two or three times a day and has done so since we were in 9 South Lat

Journal Amulet from Boston

Sat 15<sup>th</sup> Jan 1848  
all this day brisk gales from  
NW to West and passing  
clouds at 8 AM frequent rain  
squalls No Observations  
Barometer 29.85 Thermometer 73.  
55 days out of Boston

Sunday 16<sup>th</sup> Jan  
All this day light breezes  
from the S W and  
pleasant weather saw  
an albatross for the first  
time. Lat by Obs 34-50 S  
Long by Obs 126-33. W Barometer 30  
Thermometer 73

Monday 17<sup>th</sup> Jan  
All this day brisk breezes from  
the NW and fine weather  
Lat obs 35-15 S Long by Chron 845-2  
Barometer 29.95 Thermometer 73  
58 days out

towards Colombo and Calcutta

Tuesday 18<sup>th</sup> Jan 1843

Commences with strong  
breezes from the W<sup>2</sup> and  
fine weather the ship  
going 11 knots with all  
sail set at 12 wind west  
squally with heavy rain  
took in studding sails and  
topgallants & double reefed  
topsails curled in main sail  
& spanker Ends with heavy  
gales and squally weather  
Set by the 35-25 & Long by the  
4-42 W Baromet 29.80 Thermom  
74° 5.9 days out from Boston

## Journal Amulet from Boston

Wednesday 19<sup>th</sup> Jan 1848  
Commences with brisk gales & cloudy  
at 2 P.M. the wind inclines to  
the S.W. and moderates, set all  
sail, steering S.E. by E at 10 o'clock  
wind South light breezes & cloudy  
hailed in the studding sails and braced  
up Ends with light breezes and passing  
clouds wind varying from South  
to S.E. Lat by Obs 35° 42' Long by Chron  
2° 05' W. Barometer 30.15 Thermometer 64  
Large numbers of birds about of various  
kinds the Albatross is the largest  
80 days out, and a head wind to  
contend with is not that discouraging

towards Colombo & Calcutta

Thursday 20<sup>th</sup> Jan 1848

Commences with light breezes from the S.E. and pleasant weather at 4 P.M. tacked to S.W. through the night baffling winds and calm at intervals. at 9 A.M. light breezes from the East. this day ends with the breeze gradually increasing & inclining to N.E. the Moon has fallen to day. so I am in hope the wind will haul round to N.W. and hold a while. we have made a bad days work the last 24 hours hope to do better for the future. Lat by Obs 35-42 South Long by Obs 1-13 West. Barometer 30-20 Thermometer 67 the Barometer rises with a southerly wind and falls with a northerly wind generally I observe.

81 days out

Journal Amulet from Boston

Friday 21<sup>st</sup> Jan 1848

Commenced with light breezes  
from the N & and cloudy at  
2 P.M. set for topmast stunsail  
through the night strong breezes &  
cloudy wind gradually inclining  
to North East with strong  
gales and frequent rain, squalls  
furled royals Miz to pallants  
spanker No Obs this day  
Barometer falling gradually  
since 9 P.M. Lat by acct 37-09.5  
Long by acct 2-08. E Barometer 29-80  
Thermometer 58 62 days out 1/100

Saturday 22<sup>nd</sup> Jan 1848

Commenced with strong gales  
and cloudy weather Amulet going  
9 to 10 knots Middle & latter part  
more moderate with drizzling rain  
weather similar to that we have on the  
Bank New foundland saw a school  
of Porpoises to day No Obs this day  
Lat by acct 38-58 Long by acct 6-42 E  
Barometer 29-70 Thermometer 58



towards Colombo & Calcutta

Sunday 23<sup>d</sup> Jan 1845

Commenced with light winds  
from the N<sup>W</sup> and cloudy, with  
fog and drizzling rain at intervals.  
Barometer rising gradually. Middle  
part the same at 12 Noon the wind  
suddenly changed to S<sup>W</sup> without  
other warning than light drizzling  
rain. took in studding sails royals  
top gallants girth & spanker hauled  
up the mainsail. Ende strong breeze  
from the S<sup>W</sup> and raining Barometer  
the same as at 10 of the 29-90/100 Obs  
Lat by acct 3<sup>o</sup> 38' Long by acct 9<sup>o</sup> 16' E  
Thermometer 68

64 days from Boston and alls  
well if the wind don't haul  
to the South. but while I am writing  
there comes a pour of sea fore Bruce  
that sounds Bad

Ship Amulet from Boston

Monday 24<sup>th</sup> Jan 1848  
Commences with strong  
breezes from the S W and  
cloudy at 4 P.M. to clear  
set all sail Ends with  
light airs from the west  
and fine weather Lat Dec 38-29  
Long by Chron 11-55 Barometer  
30.0 Thermometer 67  
65 days out

Tuesday 25<sup>th</sup> Jan 1848  
Commences with fine breezes from  
the S W and pleasant weather  
at 10 P.M. the wind inclines  
to the South with strong  
breezes and frequent rain squalls.  
through the night strong breezes  
and clear at 4 A.M. more moderate  
made all sail by the wind  
Lat by Chron 39-05 S Long by Chron 14-25, E  
Barometer 30-10<sup>100</sup> Thermometer 61°  
66 days out

towards Colombo & Calcutta

Wednesday 26<sup>th</sup> Jan 1848

Canoe was with light breeze from  
the NW and pleasant  
middle part calm at 5 till  
light breeze from the SW  
throughout these 24 hours  
a heavy swell from the SW  
steered SE per Comp and  
found her in the same latitude  
as yesterday can see no reason  
for her not making farther  
except the swell Let by Obs 39-0.5  
Long by Obs 15-18<sup>0</sup> Barometer 30-10/100  
Thermometer 54<sup>0</sup>  
87 days from Boston

Ship Anulet from Boston

Thursday 27<sup>th</sup> Jan 1848

Commenced with <sup>light</sup> breezes from  
the S<sup>W</sup> to S<sup>W</sup> by W going 4 to 4 1/2  
knots steering S<sup>E</sup> by E until 11  
P.M. when it became calm with  
a very heavy swell from the S<sup>W</sup>  
we closed up all sail as she was  
slatting them out very fast.  
by the log she has gone 45 miles  
S<sup>E</sup> by E allow two and half points  
west by variation gives an E<sup>1/2</sup> S  
Course dist 45 miles instead of  
that I find by good observations  
that she has made an E<sup>1/2</sup> S true  
Course dist 70 miles notwithstanding  
the heavy swell which has set her  
N<sup>E</sup> per Comp at least 1 knot. we  
have had a current setting us S<sup>E</sup>  
per Comp 50 miles these 24 hours  
is it not strange that I should find  
her so far south today. as she did  
not make so much southern  
yesterday as she ought by Log  
Lat by Obs 39-38 Long by Obs 18-10 E  
Barometer 30-10/100 Thermometer 71  
S<sup>E</sup> days out

towards Colombo & Calcutta

Friday 28<sup>th</sup> June 1848

Commenced with light breezes from  
the Eastward & passing clouds  
at 1 P.M. made all sail on the  
larboard tack. sailed to day S by E & E  
dist 96 Miles. and have experienced  
a knot Current. I should think  
due East. latter part fine breezes  
pleasant weather & smooth sea  
barometer gradually falling saw  
a large number of whales &  
fin backs. the water appears to  
be very much discoloured at  
noon. very few birds about  
this is a very bad wind indeed  
hope to have a better one soon.  
Set by Obs 40-47 & Long by Chron 20-12. E  
Barometer 29.85 Thermom. 58  
was Camp 2 1/2 pts west  
59 - Days out

Journal Amulet from Boston

Saturday 29<sup>th</sup> Jan 1848  
Commences with light airs  
from the East and pleasant  
weather at 4 P.M. light air  
from the South leading ESE  
rather part gentle breeze and  
fine weather heavy swell from  
the NE nothing of importance  
to note during this 24 hours  
Lat by Obs 40-38 Long by Obs 22-04 E  
Barometer 30-95 Thermometer 64  
Var Combs 2  $\frac{3}{4}$  points

Sunday 30<sup>th</sup> Jan 1848  
Commences with light airs  
from the SSE and fine weather  
at 4 P.M. Calm at 12 mid night  
light airs from ESE and  
passing down saw a Bark  
to windward steering East East  
North East & rather part light  
airs from W E and fine weather  
Lat by Obs 40-34 Long by Obs 23-12 E  
Barom 30-00 Therm 70  
71 days out

Towards Calombo. & Calcutta

Monday 31<sup>st</sup> Jan 1845

Commences with fine breezes from  
the North and passing clouds  
Middle part calm at 4 o'clock  
light breeze from the S.W. and  
foggy the Bark that we saw  
yesterday is about 3 miles from  
us on our weather beam Eads  
wind South and very light  
at 12 thick fog no Oles this day.  
Large schools of blackish about.  
we are having a very hard time  
of it this 3 or 4 days and every  
prospect of a long passage  
Lat by acct 40 = 33.28 Long by Chron 25 = 17.5  
Barometer 30 = 9/10 Thermometer 54  
72 days from Boston

Journal Amulet from Boston

Tuesday 1<sup>st</sup> Feb 1848  
all this day light breezes  
from the East and clouds  
our Company keeper is about  
6 miles on the sea quester  
saw a ship on our lee beam  
5 miles off standing to  
Northward No other this  
day Lat by h. c. 39-49  
Long by obs 25-61 Barometer  
30-05 Thermometer 64

Wednesday 2<sup>nd</sup> Feb 1848  
all this day strong breezes from  
the S<sup>E</sup> and passing clouds at  
6 P.M. exchanged signals with  
a Bark but could not make  
him out. 2 Barks & a Ship in  
Company at 12 double reefed  
topsails. at 9 A.M. exchanged  
signals with an American  
Ship with a blue haze 3 white  
letters in it could not make  
them out at 12 tacked  
to S<sup>E</sup> 2



towards Palombo & Calcutta

Wednesday 2<sup>nd</sup> Feb Continued  
set whal. tarpaul & top gallants  
& main top mast stays will  
Lat by Obs 38-15 Long by Obs 25-45  
Barometer 30-00 Thermometer 69  
War Count 2  $\frac{3}{4}$  Boin to

74 days out from Boston  
dreadful hard wind.

Thursday 3<sup>rd</sup> Jan 1848

All this day light breezes from the  
SE and fine weather. Saw nothing  
of the vessels that were in company  
yesterday at 9 A.M. tacked to  
E by N there is a long swell from  
the SW to day. no current

Nothing of importance to communicate  
Lat by Obs 39-26 S Long by Chron 27-02. E  
Barometer 30-06 Thermometer 68

75 days out. New Moon tomorrow  
am in hope to get a fair wind then  
if not we shall have a very long  
passage I fear.

# Ship Anulet from Boston

Friday 4<sup>th</sup> Feb 1848  
Commenced with light breezes  
from SE and fine weather  
middle part wind SSE  
and foggy, latter part SE  
and squally furl'd topgall into  
Main topmast stay sail &  
fly in. The matter of importance  
to note Lat by Obs 38-20 S  
Long by Chronometer 28-47, E  
Barometer 30-12 Thermometer 73  
76 days out

Saturday 5<sup>th</sup> Feb 1848  
Commenced with strong breezes from  
the SE and squally weather  
at 9 P.M. cleared off clouds with  
strong breezes from the SE and  
fine weather at 4 P.M. saw a  
Bark standing by the wind to  
southward Lat by Obs 40-16. S  
Long by Obs 29-29 Barometer 30-00  
Thermometer 68  
77 days out

# towards Colombo & Calcutta

Sunday 5<sup>th</sup> Feb 1848

Commences with light breeze  
from the S E and cloudy weather  
Middle part wind East Barometer  
falls a little latter part light  
breezes and a heavy swell from the  
N E barometer falling a good deal  
caught 3 Albatross & one other bird  
a Cape Hen I think. Lat by Obs 41-40 S  
Long by Chronometer 31-06. E Barom 29-7 $\frac{1}{100}$   
Thermometer 55° var Combs 2 $\frac{3}{4}$  pts  
78 days out from Boston.  
Oh! that we may have a  
fair wind

Monday 7<sup>th</sup> Jan 1848

Commences with light airs from  
the N E and cloudy weather at  
8 P M the wind came out at S W  
in a squall furl'd topsail to 5<sup>th</sup>  
spanker & Main sail & double  
reef'd topsails. Middle part the  
gale increasing with tremendous  
squalls close reef'd the Fore &  
furl'd Miz topsail kept her  
East End with heavy gales &  
squally weather with a bad sea.

# Annulet from Boston

7<sup>th</sup> continued  
running the ship labouring  
heavy and shipping large quantities  
of water. obliged to keep her off  
E & E in the squalls set by Obs 40-16  
Long by 33-00 & Barometer 29-80 Therm 54  
29 days out

Tuesday 8<sup>th</sup> Feb 1848

Commences with heavy gales S W  
& squally weather with heavy sea  
at 4 P.M. moderates set Miz tops  
at one reef out fore tops and set  
Main & Genl. hauled up E & E.  
through the night strong gales &  
cloudy. latter part Moderates  
Barometer rising. at 4 A.M. set  
whole topsails. Ends with brisk  
gales & passing clouds all part  
set. Set by Obs 39-42 Long by Obs 37-05  
Barometer 29-90 Thermometer 5-8

30 days out

Saw a sail ahead from topsail  
yard

# Towards Colombo & Calcutta

Wednesday 9<sup>th</sup> Feb 1847

Commences with brisk breezes  
from SW and and fine weather  
with a large swell. Ship's rolling  
very heavy. Middle part wind  
inclines to west with light breezes  
Ends with light air from the NW  
and fine weather. Caught 6 Albatross  
put the Ship's name, date, Lat.  
& Long. on them. & let them go.

Lat by Obs 39-43.5 Long 39-15. E  
Barometer 29-95/100 Therm 54°

81 days out from Boston

Thursday 10<sup>th</sup> Feb 1848

Commences with light breezes  
from the east and fine weather  
Middle & latter part the wind  
inclines to NE with thick rainy  
weather so Obs this day

Lat by acct 40-06 Long by acct 42-10  
Barometer 29-80 Therm 56°

82 days out

# Ship Annulet from Boston

Friday 11<sup>th</sup> Feb 1847

Commences with strong gales from  
the North and rain at 4 PM  
double reefed topsails at 8 o'clock  
Moderate let out reefs & set  
Main top sail latter part  
the wind hauled round to  
SW thick foggy, we then  
set Main royal Fore top mast  
& lower studding sails. Lat by Obs  
no Obs this day Lat by acct 39-52  
Long by do 45-16 Barometer 29-80  
Therm 82 83 days out

Sat 12<sup>th</sup> Feb 1848

Commences with gentle breezes from  
the NW and cloudy middle part  
the wind hauls to South thick rainy  
weather latter part light breezes  
and passing clouds a Bark astern  
which rather out sails us. Caught 5  
Albatross Lat by Obs 39-32 S  
Long by Obs 49-12 East Barometer 30-40/100  
Therm 54. 84 days out

# Towards Colombo & Calcutta

Sunday 13<sup>th</sup> Feb 1848

Commences with light breezes from the Southward and cloudy weather Middle & latter part brisk breezes and passing clouds. the Bark that we saw yesterday is about 10 Miles on our weather beam. indifferent Lat by Obs 39-31,  $\text{S}$  Long by Obs 52-36 East Barometer 30- $\frac{15}{100}$  Thermometer 59. 85 days out

Monday 14<sup>th</sup> Feb 1848

Commences with light breezes from the Southward and cloudy weather. Middle & latter part light baffling winds and cloudy uncomfortable weather saw a school of Porpoises did not stop around the Ship No Obs Lat by acct 39-05 Long by acct 54-16 Barometer 30- $\frac{25}{100}$  Thermometer 58 86 days out

Amulet from Boston towards

Tuesday 15<sup>th</sup> Feb 1848

Commenced with light air from  
the SE and cloudy weather at  
8 P.M. tacked to South through  
the night Calm latter part  
light air from N E and  
fine weather. Lat by Obs 38-52, S  
Long by Obs 54-45, E Barometer 30-34  
Thermometer 56 it is now 20 days  
since we passed the Cape we have  
had all most a continual dead  
wind since then. we have been in  
from 38 to 42 South and no  
better winds in 42 South than  
38 it is really trying to my Patience  
but what are you going to do  
about it.

85 days Old



# Colombo & Calcutta

Wednesday 16<sup>th</sup> Feb 1847

All this day light air from  
the Eastward and clear weather  
lowered the boat and scraped  
of the barnacles & grass

Lat by Obs 39-22 Long by Obs 55-20 E  
Barometer 30-35 $\frac{1}{10}$  Thermometer 70  
E 88 days out

Thursday 17<sup>th</sup> Feb 1847

All this day light air from  
E & NE & pleasant weather  
a ship in company to leeward  
but could not make him  
out Lat by Obs 39-43

Long 56-45 E Barometer 30-35 $\frac{1}{10}$   
Thermometer 66

89 days out

Friday 18<sup>th</sup> Feb 1847

Commenced with light air  
from East and fine weather  
Middle & latter part light air  
from NW & pleasant saw a sail  
ahead Experimented 25 miles SE

Current Lat 40-01 Long 58-20  
Barometer 30-35 $\frac{1}{10}$  Therm 71  
90 days out

Amulet from Boston towards

Sat 19<sup>th</sup> Feb 1847

Commences with light breezes  
from the N N W and pleasant  
weather Middle & latter part  
the wind inclines to the  
Southward with passing clouds  
nothing in sight to day Lat Obs 39-36  
Long by Obs 59-55 East Barometer 30-40/<sub>100</sub>  
Thermometer 58.

91 Days out. oh! what a paper  
but can not help it.

Sunday 20<sup>th</sup> Feb 1848

Commences with light breezes from  
the South and fine weather  
Middle part the wind inclines  
to the East moderate breezes &  
cloudy Lat 38-25. Long by Obs 61-6. E  
Barometer 30-40/<sub>100</sub> Thermometer 57

92 = days out from Boston

Colombo & Calcutta 1848

Monday 21<sup>st</sup> Feb 1848.

All this day light breezes from the  
Eastward and fine weather at 4 AM  
tacked to S. E. Lat by Obs 37-51,  $\Delta$   
Long by Obs 61-25. East. Barometer 30-35/100  
Thermometer 68

93 days out. ok; but far bear.

Tuesday 22<sup>nd</sup> Feb 1848

All this day light breezes from  
S to S. E. and cloudy with passing  
rain squalls Lat by Obs 38-53,  $\Delta$   
Long from Obs 63-18, E. Barometer 30-37/100  
Thermometer 69

94 days from Boston

Wednesday 23<sup>rd</sup> Feb 1848

All this day light breezes from the  
East and dull cloudy weather  
Lat by Obs 39-54  $\Delta$  Long by acct 64-48  $\Delta$   
Barometer 30-30/100 Thermometer 69

95 days out from Boston

Account from Boston.

Thursday 24<sup>th</sup> Feb 1848.

All this day light ~~light~~ air from the  
Eastward and dull cloudy weather  
with light drizzling rain at intervals  
Nothing of importance to note  
Observations indifferently Lat by Obs 40-36.  $\frac{1}{2}$   
Long by Obs 67-58.8 Barometer 30.2  $\frac{1}{100}$   
Thermometer 58

96 days out of Boston

Friday 25<sup>th</sup> Feb 1848

All this day light air from  
the East and fine weather  
at 5 P.M. saw a Brig steering  
to Northward Lat by Obs 41-23  
Long 67-59 East Barometer 30-15  
Therm 58 97 days out

Sat 26<sup>th</sup> Feb 1848

Commenced with light air from  
the East and fine weather Middle  
part foggy latter part brisk breeze  
from the East & frequent rain squalls  
No Obs Lat by acct 39-55 Long by acct 67-50  
Barometer 30.9  $\frac{1}{100}$  Therm 59  
98 days out

towards Colombo & Calcutta. 1848.

Sunday 27<sup>th</sup> Feb 1848

Commences with brisk breezes  
from the East and rainy at  
4 P.M. tacked to ESE latter  
part wind NNE and thick  
foggy weather No Obs

Lat by acct 39-14 Long do 68-20 E  
Barometer 30/100 Thermometer 67

Monday 28<sup>th</sup> Feb 1848

Commences with light breezes  
from the NNE and thick rainy  
weather Middle part brisk breezes  
from N by E and thick fog

Latter part strong gales & foggy  
at intervals. No Meridian Obs

Lat by Sumners Method 38-08. <sup>Long</sup> 71-12

Lat by acct 38-24 - Long by acct 71-26

Barometer 29.85/100 Thermometer 68

100 days from Boston

Amulet from Boston towards

Tuesday 29<sup>th</sup> Feb 1848

Commences with strong gales from  
the Northward and thick fog &  
drizzling rain at 4 P.M. the wind  
hauled N<sup>W</sup> with moderate  
gales & peeping clouds yet top galls  
& studding sails latter part the  
wind inclines to S<sup>W</sup> yet  
starboard studding sails carried away  
starboard fore yard arm in  
sheave hole. Clewed the topsail  
up & fished it & set studding sails  
again ends strong gales & clear  
weather. Lat by Obs 36-45. S Long 73-54  
Barometer 30-00 Thermometer 68  
101 days out from Boston

Wednesday 1<sup>st</sup> March

Commences with brisk breezes  
from the S<sup>W</sup> and peeping clouds  
Middle & latter part light  
breezing winds & clear Lat by Obs  
35-00 S Long 75-54 E  
Barometer 30-25/100 Therm 68  
102 days out

Colombo & Calcutta

Thursday 3<sup>rd</sup> March 1848

all this day light baffling  
winds & pleasant

Lat by Obs 34-08 Long by do 76-59

Barometer 30-20 Thermometer 70

Friday 3<sup>rd</sup> March

Commences with light variable  
airs and fine weather middle part

calm latter part light breeze

from the N.E. and cloudy

No Obs this day Lat by acct 34-01

Long by acct 78-29 & Barometer 30-20

Thermometer 70

Saturday 4<sup>th</sup> March 1848

All this day light breezes from

the N.E. and fine weather at 5 P.M.

tacked to N.N.W. at 12 mid night

tacked to East. Lat by Obs 33;28. S.

Long by chronometer 79-00. E. Barometer 30-15.

Thermometer 74. 105 days out

Amulet. from Boston towards

Thursday 5<sup>th</sup> March

All this day light breezes  
from N<sup>E</sup> by E and fine weather  
Lat by Obs 32-27 Long by Obs 78-43 E  
Barometer 31-10/100 Thermometer 73°  
106 days out

Monday 6<sup>th</sup> March 1848

All this day light breezes from  
N<sup>E</sup> and pleasant weather  
Lat by Obs 30-38 S Long Chron 77-08, E  
Barometer 30 1/4/100 Thermometer 76°  
107 days out.

Tuesday 7<sup>th</sup> March

Commences with light baffling  
airs and pleasant weather  
at 5 then light breezes from  
E S E and light rain squalls  
Lat by Obs 29-56 S Long by Chron 77-05, E  
Barometer 30-20/100 Thermometer 75°  
108 days out



Colombo. Isle Ceylon

Wednesday 8<sup>th</sup> March 1848

All this day brisk breezes from East and fine weather

Lat by obs 27-39 Long by chron 77-42 E  
Barometer 30-14/100 Thermometer 74°

109 days out

Thursday 9<sup>th</sup> March

All this day brisk breezes from the Eastward and fine weather

Lat by Obs 25-15. Long by chronometer 78-12 E Bar 30  
Thermometer 75

110 days out

Friday 10<sup>th</sup> March 1848

All this day brisk breezes from the Eastward and fine

weather Lat by Obs 22-19 Long 78-13  
Barometer 29-95 Therm 79

111 days out from Boston

Saturday 11<sup>th</sup> March 1848

All this day fine breezes from East to ESE and pleasant weather at 9 the

exchanged signals with British

Ship Sophia steering west

Lat by Obs 19-44 Long by chron 78-5-7 E  
Barometer 29-90/100 Therm 80

Annulet from Boston towards

Sunday 12<sup>th</sup> March

All this day light breezes from East to SE and pleasant weather Lat by Obs 17-05. L Long by chronometer 79-32 East Barometer 29-85 Thermometer 82

113 days out

Monday 13<sup>th</sup> March

All this day light breezes varying from East to South and frequent light rain squalls Lat by Obs 15-06. L Long by chron 79-35 E Barometer 29-75 to 80 Thermometer 82 114 days out

Tuesday 14<sup>th</sup> March

All this day light variable breezes and frequent rain squalls No Obs Lat by acct 13-38 L Long obs 79-45 East Barometer 29-75 to 80 Thermometer 83

115 days out from Boston.

Colombo & Calcutta 1848

Wednesday 15<sup>th</sup> March 1848  
Commenced with light breezes  
from the N.W. and light rain.  
squalls at 4 P.M. the wind  
hauled round to N.W. Moderate  
breezes and passing clouds  
Ends with brisk breezes from  
N.W. and passing clouds  
Lat by Obs 11-28.5. Long do 80-50. E  
Barometer 29.80 to 85 Thermometer 84

116 days out

Thursday 16<sup>th</sup> March 1848  
all this day buffeting, light, N.W.  
winds and squally Lat by Obs 9-51.5  
Long do 81-34. E Barometer 29.90 Therm 85

Friday 17<sup>th</sup> March

All this day light breezes from  
west to N.W. Middle part  
squally with rain Lat by Obs 8-28  
Long by Chron 81-32 E Barometer 29.90  
Therm 84. 118 days out

# Ship Anulet from Boston

Saturday 18<sup>th</sup> March 1848  
Commenced with light breezes  
from the N. W. W. and pleasant  
Middle part squally at 11 P.M.  
in a heavy squall close reef  
topsails furled Main and Miz tops  
at 11 set double reefed topsails  
Courses Jib & spanker at 2 AM  
set whole topsails ends with  
light breezes from west to N. W. W.  
and pleasant weather all sail set  
by the wind Lat by Obs 6-16.1  
Long by chron 81-18.6 Barometer 29.88  
Therm 83. 119 days out.

Sunday 19<sup>th</sup> March 1848  
All this day light breezes from the  
westward and pleasant weather found  
a current setting E. N. E. 25 Miles this  
24 hours Lat by Obs 3-51 South  
Long by chron 81-11 E Barometer 29.90  
Therm 87 120 days out

towards Colombo & Calcutta 1848

Monday 20<sup>th</sup> March 1848  
Commences with light breezes  
from the westward and pleasant  
Middle and latter part light  
breezes from S W to W S W and  
fine weather experienced about  
the same current as yesterday.  
observed the Moon to be totally  
eclipsed Lat by Obs 1-55. S  
Long by Chron 80-15 E Barometer 29-90  
Therm 87 121 days out

Tuesday 21<sup>st</sup> March 1848  
Commences with light breezes from  
the S W and fine weather Middle  
part the same latter part the  
wind hauled to the South with  
frequent rain squalls Lat by Obs 20-11 S  
Long by Chron 79-26 E Barometer 29-90  
Therm 86 122 days out

Ship Anulet from Boston towards

Wednesday 22<sup>nd</sup> March 1848  
Commences with light airs from  
the westward and fine weather.  
at 5 P.M. passed a Bark stating  
South. Middle part baffling winds  
and heavy rain squalls. Latter part  
steady winds from west and fine  
weather Lat by Obs 2.05. N  
Long by Chronometer 79.24 East  
Barometer 29.90<sup>100</sup> Therm 83

123 days out

Thursday 23<sup>rd</sup> March 1848  
Commences with fine breezes from  
the westward and pleasant weather.  
Middle and Latter part light baffling  
winds from the northward and fine  
weather. Lat by Obs 3.24. N Long by Chron 79.50. E  
Barometer 29.90<sup>100</sup> Thermometer 86

124 days from Boston. ok!

Colombo & Calcutta 1848

Friday 24<sup>th</sup> March 1848

Commences with light air from the Northward and calm at 5 AM light breeze from the Northward and very smooth sea & fine weather at 1 P.M. tacked to westward experienced 15 miles current setting E & S lat by Obs 3-28 N Long by Chron 79-26 West Barometer 29.94<sub>100</sub> Thermometer 88 125 days out

Sat 25<sup>th</sup> March 1848

All this day light heaving air & Calm experienced 20 miles E & S current Lat 3-29 Long 79-30 Barometer 29.90 Thermometer 98 very warm. water 81

126 days out

Sunday 26<sup>th</sup> March 1848

all this day Calm experienced No Current Lat by Obs 3-44 at Long by Chron 79-50 Barometer 29.95 Thermometer 88

saw plenty of fish of all kinds whales Porpoises Dolphin Bonita Sharks &c & lots of small fry.

Ship Account from Boston

Monday 27<sup>th</sup> March  
Commences with light air from the  
Eastward and pleasant weather  
at 8 P.M. Calm at 10-30 Am  
squally wind N.E. No Obs. Lat by ~~Obs~~ <sup>acct</sup> 4-20  
Lon by acct 79-20 E Barometer 29-96  
Therm 84 Caught a Porpoise

128 days out

Tuesday 28<sup>th</sup> March  
All this day light breeze from the  
East and fine weather experienced  
sixty Miles westerly Current the last  
two days Lat by Obs 5-43 N  
Long by Chronometer 78-30 E Barometer 29-98  
Thermometer 87 129 days out

Wednesday 29<sup>th</sup> March 1448  
all this day Calm experienced 50 Miles  
Current setting N.W. Lat by Obs 6-17 N  
Long 77-53 East Barometer 29-95 Thermometer 90  
130 days out





towards Colombo & Calcutta 1848

Thursday 30<sup>th</sup> March 1847

All this day light air from the west  
strove East experienced 20 Miles  
N W Current Lat by Obs 6-37 N  
Long by Chron 78-13 E Barometer 29.90 to 95  
Therm 88 131 days out

a ship in Company on the weather  
bow standing to Eastward

Friday 31<sup>st</sup> March 1848

Continued with light air  
from S W to West and  
fine weather. Middle &  
Latter part light air from  
South to S E and pleasant  
weather experienced little westerly  
Current Lat by Obs 6-48 N Long 79-10  
Barometer 29.95 Therm 88

132 days out our Company  
keeper on the weather quarter

Ship Amulet from Boston

Saturday 1<sup>st</sup> April 1848

Commenced with light air from the westward and pleasant weather Middle squally with lightning thunder &c at 5 am made the west coast of Ceylon 20 miles to southward of Colombo when it died away calm at 12 noon noon 10 miles to southward of Colombo at 1 P.M. made the flag staff & light house on the Port Colombo light is a fixed light but a poor one. at one P.M. fine breeze from the S.W. the light bearing N.E. at 4 o'clock came to in Colombo road the light bearing S.E. dist 2 miles. in 9 fathoms water. went on shore and found all mills waiting for us. so ends this day

Monday 2<sup>nd</sup> April

First part of this day light breeze from the land latter part fresh breeze from the S.W.

Monday 3<sup>rd</sup> April

All this day strong breeze from the S.W. and squally with heavy thunder lightning &c Ship Colombo struck with lightning

towards Colombo & Calcutta

Tuesday 4<sup>th</sup> April

Commenced with light breeze from the land got underweigh and moved farther in with Light house S by E & E dist<sup>d</sup> 1 1/2 miles in 9 fathoms water. had S W wind the latter part of this day

Wednesday 5<sup>th</sup> April

All these 24 hours light breeze from the west got every thing ready to go to sea at a moments notice in case it comes on to blow

Thursday 6<sup>th</sup>

This day land breeze first part sea breeze Middle & latter part commenced discharging ice

Friday 7<sup>th</sup> April

First part land breeze middle & latter part sea do

Saturday 8<sup>th</sup>

First part light breeze from the S W and fine weather latter part heavy squalls with lightning Thunder &c

Annelit laying in Colombo

Sunday 9<sup>th</sup> April 1848

All this day light sea breezes and pleasant weather

Monday 10<sup>th</sup>

Commences with light breezes from the SW and fine weather latter part squally with sharp lightning heavy thunder & rain

Tuesday 11<sup>th</sup> April

Commences with light breezes and a heavy swell from the westward ends squally

Wednesday 12<sup>th</sup>

All this day brisk breezes from the SW & raining with a heavy swell heaving in

Thursday 13<sup>th</sup> April

All this day variable winds & weather with a heavy swell from NW

Friday 14<sup>th</sup> April

All this day SW winds & a heavy swell heaving in

Amulet laying in Colombe

Sat 15<sup>th</sup> April

All this day squally weather with a heavy swell from the westward finished discharging the ice & got ready for sea

Sunday 16<sup>th</sup> April

Commences with light breezes from the S W and fine weather not so much swell latter part very squally with sharp lightning heavy thunder and a deluge of rain

Monday 17<sup>th</sup> April

All this day wind S W and squally with a very heavy swell heaving in, so that it is most impossible to cross the bar in a boat

Tuesday 18<sup>th</sup> April

Commences with light breezes from the S W and a heavy swell but not so much as yesterday. Ends with heavy squalls sharp lightning thunder & a deluge of rain the Ship Admiral Cochran had his foremast carried away by lightning

Ship Anulet from Colombo

Wednesday 19<sup>th</sup> April  
all this day light breezes from  
the N W and fine weather at  
8 am got underweigh for Calcutta  
this day ends at noon as does my account  
of wind time

Thursday 20<sup>th</sup> April  
All this day light breezes from the  
westward Lat by obs 6-58. N

Friday 21<sup>st</sup> April  
All this day light breezes from the  
west and cloudy at 6 Pell Donora  
Head bore North per Comp dist 6 miles  
at 11 Am the great Bassas bore North  
dist 2 miles

Saturday 22<sup>nd</sup> April 1748  
Commenced with light breezes from  
the N E and fine weather at  
4 Pell the little Bapas bore North  
per Comp dist 2 miles at 8 do  
the wind came out at N E  
ends with light baffling airs  
and Calm Lat by Obs 6-58  
Long by Chron 82-36

towards Calcutta

Sunday 23<sup>rd</sup> April

Commenced with light baffling winds  
& squally at 4 P.M. tacked to westward  
at 8 o'clock tacked to ENE at 11 o'clock  
tacked to NNW Middle part  
Calm at 2 o'clock light airs from  
west ends with light breezes and  
pleasant at 8-30 A.M. the  
Mountain on the East Coast Ceylon  
called Westminster Abbey here  
W.S.W. per Camp dist 56 Miles  
by Obs & Chron Lat by Obs 7-22 N  
Long by Chron 82-46 Barometer 29-80/100  
Thermometer 86 to 88 4 days out

Monday 24<sup>th</sup> April

All this day light baffling winds  
& squally tacked ship as occasion  
required Lat by Obs 8-00 N Long 82-48  
Barometer 29-80 Thermometer 87 5 days out

Tuesday 25<sup>th</sup>

Commenced with light baffling airs & calms  
at 5 P.M. light breezes from the Eastward  
with Thunder lightning rain & c. ends light  
breezes from the SE and pleasant Lat by Obs 9-35  
Long by Chron 82-39 Barometer 29-85 Therm 82 to 86  
6 days out from Colombo

Ship Anulet from Colombo

Wednesday 26<sup>th</sup> April  
Commenced with light air from  
the ENE and fine weather  
Middle part light air and cloudy  
Latter part buffing winds & heavy  
squalls thunder lightning & terrible rain  
In the day Lat by acct 10-33 N  
Long by acct 82-03 Barometer 29-45  
Thermometer 84 to 86. 7 days out

Thursday 27<sup>th</sup> April  
Commences with light buffing  
winds & squally with thunder lightning  
and very heavy rain Middle part  
heavy squalls at 10 PM double  
reefed topsails & wore ship to NE  
at 2 AM the wind hauled round  
to the westward wore ship to N by E  
Ends with fine breeze from the west  
and fine weather Lat by Obs 11-01 N  
Long by chronometer 81-5-3. E Barometer 29-70  
Thermometer 86. 8 days out



towards Calcutta

Saturday 28<sup>th</sup> April 1848

All this day brisk breezes from the S<sup>W</sup> and pleasant weather Lat by Obs 15-35  
Long 82-38 Barometer 29-75 Therm. 85

Saturday 29<sup>th</sup> April

All this day fine breezes from the Southward and pleasant weather. exchanged signals with an English Brig standing by the wind to Eastward  
Lat by Obs 15-59 N Long by Chron 83-49 E  
Barometer 29-70 Thermometer 87

10 days out from Calcutta

Sunday 30<sup>th</sup>

All this day strong breezes from S<sup>W</sup> and pleasant weather at 10 AM made the high land to the South of Governant Pagodas bearing West dist 5-6 Miles Lat by Obs ~~15-47~~<sup>15-47</sup>  
Long by Chron 85-08 Barometer 29-70  
Thermometer 89

Ship Anulet from

Monday 1<sup>st</sup> May 1847  
All this day light breezes from  
SE to SW first & part thick  
& foggy at 3 AM pronounced  
in 15 fathoms mud & shells  
heard the breakers on the shore  
hauled out E & deepened to 16  
fathoms could just hear them  
at 5 AM made the land kept  
Coast aboard at 10-30 made  
False Point & light house bearing  
NNE dist 15 miles. which  
appears like a sail when  
first made. standing head  
towards you at 12 the light  
house bore about 90° dist  
8 miles ends thus

# Colombo towards Calcutta

Tuesday 2<sup>nd</sup> May  
Commenced with light breeze  
from the Southward and thick  
weather at 4 PM Thunder & lightning  
& C at 9 PM Calm at 9-30 the light  
air from SE at 11 the made the  
Pilot Brig ahead we were steering  
NE by E she was true to in 29 1/2 fathoms  
with the South channel light Brig  
bearing NE per Compass dist 8 1/2 miles  
at 11 AM made the Lower Floating  
Light bearing NE by N per Compass  
dist 7 miles at 5-30 AM made the  
E Sea reef buoy bearing ENE per Compass  
dist 3 Cables length. at 9-30 AM  
Sugar Point bore North per Compass  
dist 2 1/2 miles I forgot to say  
that the Pilot (Mr Powers) came on  
board at 12 midnight together Mr  
Long Volunteer & native permanent

Ship's Amulet Laying in

I have not kept my journal during my stay in Calcutta. We arrived off town on the 5<sup>th</sup> May dis'charged our Ballast & took in a full cargo for Boston & sailed on the 1<sup>st</sup> July without steam, got to sea & dis'charged the Pilot at 8 P M on the 11<sup>th</sup> July, without other accident than breaking our starboard lower pipe while riding at anchor in the river. This day Ends with light breezes from the South & fine weather

Wednesday July 12<sup>th</sup>

All this day light Breezes from the South & pleasant weather at 12 M Made the Pilot vessels at the station having had a strong current setting to N E Lat 20-58 N Long 87-55 E

Thursday 13<sup>th</sup> July

All this day light breezes from South and pleasant Lat by Obs 20-37 Long 87-36  
Barometer 29-70

Calcutta river Loading for Boston

Friday 14<sup>th</sup> July

Commences with light air from South  
& fine weather Middle part buffing  
winds at 8 AM light air from the North  
sent up Main Hoysal & sticking sail booms  
Ends with fine breezes from the NE &  
pleasant weather Lat by Obs 20-27 N Long 87-16  
Lat 16<sup>th</sup>

Commences with strong breezes from NE &  
fine weather set Larboard sticking sails  
at 4 PM the wind hauled to SE took  
in the sticking sails, wind hauled round  
to NSE tacked at 8 PM to southward  
strong breezes & cloudy at 12 Midnig at  
double reef'd topsails Ship heading from  
SE to South Labouring heavy & shipping  
large quantities of water & leaks considerable  
am carrying all the sail that she will bear  
to get an offing Lat by acct 19-30 North  
Long 87-28 East Therm 88 to 90 Baromet 29-50

## Ship Amulet from Calcutta

Sunday 16<sup>th</sup> July 1848

Commenced with heavy gales & dark squally weather with much rain & a heavy head sea the ship under close reef'd topsails & reef'd courses labouring heavily & the decks continually full of water. Lost many of our vegetables & much of our stock of fowls & pigs were drowned. at 3 P.M. the squalls were so heavy was obliged to have two washed away our head rails & knees Endeavour heavy gales & squally with a deluge of rain

Lat by acct 18-10 N Long 88-12 Barometer 29-5-0

Monday 17<sup>th</sup> July

Commenced with heavy gales but the squalls less frequent at 1 P.M. set reef'd foresail at 2 do set close reef'd fore topsail at 3 do Came on very squally furled fore topsail at 4 A.M. set fore topsail Endeavour with heavy gales & a very bad sea the decks full of water most of the time leaks Consider<sup>able</sup> the Pumps are regularly attended

Lat by acct 16-5-3 Long do 89-00 Barometer 28-5-0

towards Boston July 1848

Tuesday 18<sup>th</sup> July  
Commences with heavy gales but the  
squalls are less frequent & not so heavy  
at 1 P.M. set the Miz topsail & reefed <sup>with</sup> main  
let the reef out of fore sail & one out of  
main topsail at 2 A.M. the wind inclines  
to southward at 2-30 do more to N.W.  
Ends with squally rainy disagreeable  
weather Lat by ~~the~~ acct 15-25 Long do 90-00 E  
Barometer 29-50

Wednesday 19<sup>th</sup> July  
Commences with heavy gales & squally  
weather with a bad sea on shipping  
large quantities of water furlled the  
Mainsail at 6 P.M. close reefed main  
topsail & reefed foresail Ends the same  
at 10 A.M. furlled the Miz topsail  
Lat by Obs 15-43 N Long by acct 89-36

Barometer 29-50

Thursday 20<sup>th</sup>

All this day much the same  
as yesterday No Calcs  
Lat by acct 16-39 Long do 88-50 Barom 29-50  
and has remained the same throughout  
the gale

## Ship Amulet from Calcutta

Friday 21<sup>st</sup> July 1848

All this day strong gales with heavy squalls at 5 P.M. set the mig top sail  
Lat by Obs 16-56 Long 89-00 Barometer 29-50

Sat 22<sup>nd</sup>

Commences with strong gales & squally with rain Middle part the same latter part moderates at 7 AM set double reefed topsails & whole courses Ends thick rainy weather No Obs Lat by acct 17-54 Long 88-33 Barometer 29-60

Sunday 23<sup>rd</sup>

Commences with strong gales & raining at 2 P.M. set gill & spanker at 8 P.M. wore to S.E. at 11 do squally furl'd gill & spanker, at 6 AM wind inclining to southward wore to W by N, at 10 do moderates set single reefed topsails  
No Obs Lat by acct 17-53 Long 88-34 Barom 29-70

Monday 24<sup>th</sup>

All this day fresh Breezes from the S.W. and pleasant weather set all sail by the wind at 10 AM tacked to S by E  
Lat by Obs 18-21 Long 89-50 Bar 29-70



Towards Boston July 1848

Tuesday 25<sup>th</sup> July 1848

All this day brisk breezes & pleasant  
all sail set by the wind  
Lat by Obs 16-38 Long 88-42 Barometer 29-74

Wednesday 26<sup>th</sup>

All this day strong breezes and passing  
clouds all sail set by the wind  
at 12 midnight tacked to 74 by N  
the ship does not make so much  
water as she did during the gale

Lat by Obs 16-04 Long 88-40 Barom 29-70

Thursday 27<sup>th</sup>

First part squally at 1 P.M. lost outer  
gib in a squall Middle & latter part  
fresh gales & passing clouds

Lat by Obs 15-41 Long 88-40 Barometer 29-70

Friday 28<sup>th</sup>

All this day strong breezes & passing clouds  
saw a Barge to leeward standing  
to westward Lat by Obs 16-48 Long 87-21

Sat 29<sup>th</sup>

All this day Brisk Breezes & pleasant  
weather nothing of importance has  
occurred since the gale

Lat by Obs 17-22 Long 86-38 Barometer 29-70

## Ship Amulet from

Sunday 30<sup>th</sup> July

All these 24 hours brisk breezes & passing clouds at 10-30 PM tacked to S S E Lat by Obs 15-49 Long 87-46

Monday 31<sup>st</sup> July

All this day brisk breezes & passing clouds at 8 AM tacked to N by N found a great deal of our water had leaked out during the gale consequently put all hands on allowance Lat by Obs 14-23 Long 88-00 Bar 29-70/100

Tuesday 1<sup>st</sup> August 1848

All this day light breezes from S W and pleasant weather at 6 PM tacked to southward Lat by Obs 14-37

Long 87-10 Barometer 29-70

Wednesday 2<sup>nd</sup>

All this day light breezes from the S S W to N S W and clear weather tacked several times as the wind hauled Lat by Obs 14-31 Long 86-56 Bar 29-70

# Calcutta towards Boston

Thursday 3<sup>rd</sup> August

All this day Brisk breezes & Candy  
at 1 Pm tacked to southward  
No Obs lat by acct 13-20 Long 87-06 Barometer 29.70

Friday 4<sup>th</sup> August

All this day brisk breezes and passing  
clouds at 9 Am tacked to Westward  
Lat by Obs 12-07 Long 87-30 Barometer 29.70

Sat 5<sup>th</sup>

All this day strong breezes and passing  
clouds at 2 Pm tacked to southward  
Lat by Obs 11-01 Long 87-56 Barometer 29.70

Sunday 6<sup>th</sup> August

All this day strong breezes & passing  
clouds at 1 Pm tacked to Westward  
at 4 obs tacked to southward  
No Obs lat by acct 9-41 Long 88-26 Bar 29.70

Monday 7<sup>th</sup> Aug

Commences with fresh breezes & passing  
clouds, Middle & Leatter part squally  
at 10 Am furled Jib & spanker & double  
reef, d topsails No Obs lat by acct ~~87-03~~<sup>88</sup>  
Long do 89-03 Barometer 29.70

# Ship's Amulet from

Tuesday 8<sup>th</sup> Aug

Commences with squally weather at 2 PM wore to West Middle & latter part more moderate set all sail by the wind Lat by Obs 7-27 Long 90-00 Barometer 29-90

Wednesday 9<sup>th</sup> Aug

All this day light breezes & pleasant weather all sails set by the wind Lat by Obs 6-43 Long do 90-33 Bar 29-90

All this day light breezes & pleasant weather Lat by Obs 4-47 N Long 90-46 Bar 29-88

Friday 11<sup>th</sup>

All this day fine weather wind S W Nothing to note Lat by Obs 3-04 N Long 91-14

Sat 12<sup>th</sup> Aug

All this day light breezes from S W and fine weather a ship in Comp standing to southward Lat by Obs 2-16 Long 92-02 E Barometer 29-90

Sunday 13<sup>th</sup> Aug

All this day light breezes & pleasant weather exchanged signals with an English ship Lat by Obs 1-39 N Long 92-16 Barometer 29-85

# Calcutta towards Boston

Monday 14<sup>th</sup> August

All this day light breezes & pleasant weather saw a Ship ahead standing to westward Lat by Obs 1-24 N Long 92-25

Tuesday 16<sup>th</sup> Aug

All this day light airs from the SW saw two Ships to windward standing by the wind to southward

Lat by Obs 0-51 N Long obs 92-41 Bar 29-80

Wednesday 16<sup>th</sup> Aug

All this day light airs & passing clouds at 8 PM tacked to westward

Lat by Obs 0-42 N Long 92-12 Barometer 29-76

Thursday 17<sup>th</sup> Aug

All this day light breezes & passing clouds saw a Ship on our lee quarter standing to westward at 12 Midnight tacked to Southward Lat 0-55 N Long 91-08

## Ship Amulet from Calcutta

Friday 18<sup>th</sup> Aug 1848

All this day light airs & Calm  
saw a ship to windward saw a ship  
to windward standing to southward  
at 8 P.M. tacked to west at 5 A.M.  
tacked to S.S. we have had a very  
hard time of it so far, but I am  
thinking we shall have better winds  
by and by Lat by Obs 0-47 N Long 91-06  
Bar 29-86 we are 38 days from the  
sand heads

Saturday 19<sup>th</sup> Aug

Commences with very light air from  
the S.W. Middle part Calm at 8  
A.M. a light Breeze sprung up from  
West, steered S by W. the ship that  
we saw yesterday is hull down on our  
weather bow, the Amulet is deep and  
sails very dull in light winds, but sails  
well in strong winds have not seen  
a ship outside her with a whole sail  
breeze, but in light winds they all  
leave her behind. I very much regret  
her having such short yards think it  
will make a great difference in our voyage  
Lat by Obs 0-24 N Long 91-06 Barometer 29-86

## Bound to Boston

Sunday 20<sup>th</sup> August

Commences with light breezes from West to W by N at 1 P.M. set fore & Main topmast & Main top of studding sails stowed & by 10 at 4-30 the wind hauled to S W took in the studding sails & braced up heading S S E to South going 3 to 4 knots at 9 the wind died away nearly calm & remained so throughout the day. saw large schools of Porpoise, & last night the first that we have seen crossed the Equatorial line at 8 P.M. Lat by Obs 00-21 South Long by Chron 90-37 East Barometer 29-86

40 days out

Monday 21<sup>st</sup> Aug

Commences with light breezes from the West and frequent squalls. at 3 P.M. set fore & Main topmast & Main top of studding sails at 6 the wind hauled to S W took in studding sails & Miz royal & Crossjack. at 8 P.M. took in Main royal fore & Miz top gallantsails & awl gill. through the night heavy squalls at intervals. at 6 A.M. not so squally set all sail by the wind Ends light Breezes & cloudy Lat by Acct 1-21 Long by Acct 90-44 Barometer 29-90 41 days out

# Journal of Ship Amulet from

Tuesday 22<sup>nd</sup> August

First part of this day light airs from S.W. middle part Calm. at 8 AM the Wind came out at N.W. in a squall which lasted 2 hours & then died away almost Calm. ends light airs from S.W. and a fair prospect of a very long passage. but these are troubles that must be borne with patience for an over ruling hand directs all for good. let us not complain about that which we can not help but "learn to be content in whatsoever situation we are placed, and be thankful that it is no worse. it is very trying to my patience to have such winds now we are out of monsoons, and I keep thinking they will be better every day and am as after disappointed. but remember disappointed often happen in life for we see people almost every day disappointed in their hopes & desires and we are taught to believe it is all for the best. Lat by Obs 2-14  
Long 90-40 Barometer 29-80 to 90  
42-day out



# Calcutta towards Boston 1848

Wednesday 23<sup>rd</sup> August

First part light airs from N.W. at 8 PM  
Calm & remained so until 10 AM when a  
light air sprung up from N.W. &  
set the studding sails & steered S by W  
Made to day only 19 Miles Southern & 7  
Miles Eastern how long we are to have such  
weather is uncertain. it makes me feel very  
uncomfortable as our Provision & water  
is going very fast. & the Ship going very slow.  
these are Circumstances that are not  
peculiarly pleasant to reflect upon after  
a man has been to sea 40 or 50 days.

our Potatoes are all gone & pumpkins nearly  
so, onions we have a tolerable supply of yet.  
the sailors the Cook tells me would not eat  
the pumpkins, therefore they have all rotted  
except a few that have been eaten in the  
Cabin. they think Pumpkins fit only for  
pigs & they probably reason thus, they  
did not eat any thing if they had he  
would not have got them. therefore we  
will not eat them

Lat by Obs 2-32 Long 90-45 Barometer 29.90  
43 days out

Amulet from Calcutta

Thursday 24<sup>th</sup> August

All this day fine Breezes from W S W  
and cloudy with frequent squalls  
attended with light rain, saw a sword  
fish to day, the first that I ever saw  
off sounding; saw a Ship ahead  
from the fore top sail yard.

No Obs to day Lat by acct 4-00 South  
Long per acct 90-45 Barometer 29-85 to 95

44 days out

Friday 25<sup>th</sup> Aug

All this day light variable breezes  
from West to S W & cloudy with  
rain squalls at intervals at 11 Am  
set fore & main top mast, studding sails

No Obs this day Lat by acct 5-24 Long Obs 90-45  
Barometer 29-80 to 95

45 days out

towards Boston

Saturday 26<sup>th</sup> August

Commences with light breezes from the  
N N W and rainy squally weather.  
at 9 PM Calm and a heavy swell  
from the S E clewed up all light sails  
Main & miz topsails. at 12 the wind  
Came from N W in a squall but soon  
died away. from 12 to 6 AM light buffing  
winds from N W to East. Ends fine breezes  
from N E & light rain squalls with a heavy  
swell from S E. we have had 40 miles  
Easterly Current fo in three days. by chron  
Lat by Obs 6=28 Long by chron 91=45 Barometer 29=80  
46 days out

Sunday 27<sup>th</sup>

Commences with brisk breezes from the Eastward  
& passing clouds. Middle part squally at 12  
Midnight furled royals & took in standing sails  
split the fore top gallant sail clewed it up & furled  
it at 6 AM split the flying jib. Ends  
strong breezes from S E and passing clouds  
strove S W Lat by Obs 9=02 Long 90=30  
Barometer 29=80 to 95

47 days out

## Amulet from Calcutta

Monday 28<sup>th</sup> Aug

All this day strong S & E trades  
& pleasant weather steered S W by W  
average little more than 9 knots. Amulet  
is very wet there is scarcely a dry spot  
for 5 minutes in a day from knight heads  
to tappan's. am obliged to make &  
repair sails on top the house. finished  
repairing the outer gill & bent it  
Made to day 220 Miles dist  
Lat by Obs 10-54 Long 87-30 Barometer 29-90 75  
48 days out

Tuesday 29<sup>th</sup> Aug

All this day brisk trades and passing  
clouds with light rain squalls at intervals  
steered S W by W 6 hours W S W 18 hours  
they have run her off. she has made W S W  
Course dist 205 Miles. this looks better  
than it does to be beating with the wind dead  
in your teeth and a lee current in the  
bargain. she has made more yesterday  
than she has in 8 days on an average  
since we left sand heads. May the breeze  
continue which is the fervent desire of your  
humble servant Lat Obs 12-15 Long 84-20  
Barometer 29-90 to 30-00

towards Boston 1848

Wednesday 30<sup>th</sup> August

All this day strong S E trades with light squalls at times attended with rain steered N S W to day 180 Miles distance saw a school of porpoises last evening. the weather is much cooler to day than it has been, a Coat is comfortable in evening & morning nothing of importance to note Lat by Obs 13-30 Long Chron 81-25  
Barometer 29-90 to 30-00

50 days out

"When fresh blows the northern gales,  
Then under courses snug we fly.  
When lighter breezes swell the sails,  
Then royals proudly sweep the sky."

Thursday 31<sup>st</sup> Aug

All this day strong S E trades through the night frequent rain squalls. steered to day S W by W 205 Miles dist. nothing of importance to note Lat by Obs 15-16<sup>S</sup> Long Chron 78-36 E since we have come into the trades they have been S E going out they were mostly from East to N E by E Barometer 30 to 30-00

51 days out

## Annulet from Calcutta

Friday 1<sup>st</sup> September

All this day brisk breezes from the S E  
and pleasant weather Course S W by W  
Dist 185 Miles Lat by Obs 17-04 S  
Long by Chron 76-05 Barometer 30-00 to 30-10

5-2 days out

Saturday 2<sup>nd</sup> Sept

All this day strong breezes from  
the S E with passing clouds & rain  
squalls Lat by Obs 18-38 Long 73-15  
Barometer 30-10 to 20

5-3 days out

Sunday 3<sup>rd</sup> Sept

Commences with strong breezes from  
the S E and squally with a heavy  
swell from the S W Middle &  
latter part more moderate & less swell  
but best foretopgallant sail Lat by Obs 20-20  
Long 70-46 Barometer 30-10 to 20 Therm 70

5-4 days out.

towards Boston sept 1848

Monday 4<sup>th</sup> Sept

Commences with fine breezes from the  
S.E. and pleasant weather Middle part  
the wind inclines to Eastward light breezes  
& cloudy. Latter part light airs from East  
& approaching to a Calm. hope we are not  
going to lose our fine & strong trades. Made to day  
130 Miles dist course steered N S W  
1/2 point Westerly var Let by Obs 21-27 Long Chron  
68-46. Barometer 30.10 to 20. Thermometer 75 to 78 in  
the Cabin. very warm & pleasant weather indeed.  
but it is far more agreeable to be running off  
with a good strong breeze. 5-5 days out

Tuesday 5<sup>th</sup> Sept

Commences with very light airs from N.E.  
& beautiful pleasant weather. at 12 mid-  
night the wind came out at S.W. light  
airs & pleasant at 6 Am squally double  
reef'd topsails ends strong gales from  
South & Clear weather Let by Obs 21-38  
Long Chron 69-40 Barometer 30-10 to 20  
Thermometer 68 in the Cabin the weather  
feels very cold to day  
5-6 days out

Amulet from Callutta

Wednesday 5<sup>th</sup> Sept  
Commenced strong gales from South  
& a heavy swell from the Westward  
at 4 P.M. the wind more favourable  
let one reef out main-topsail Amulet  
plunging in to the head sea at a  
great rate and is about as wet as a  
half-tide rock, dare not make more  
sail for fear of Pitching away our  
spars & making her leak latter part  
swell goes down & moderates set  
all sail Lat by Obs 22-19 Long Chron 56-06  
Barometer 30-20 to 30 Thermometer 69

67 days out

Thursday 7<sup>th</sup> Sept

All this day fine breezes from ESE and  
pleasant weather all sail set going 7 knots  
at 4 P.M. spoke the Dutch Barque Antoinetta-  
Maria 15 days from Java bound to Amsterdam  
he seemed to have an idea that the Dutch were  
at war, and said the French were also in trouble.  
I understood him to say the last Mail brought  
such news, he outsails us considerably about 1 knot  
but he is not high as deep which accounts for  
it. I do contend that the Amulet is a  
good Model for sailing if she had spars enough



towards Boston Sept 1848

755

She is quite sharp forward & very sharp aft. May the good winds continue and we will improve them to the best advantage.

Lat by Obs 23-13 Long Chron 62-08 Barometer 30-<sup>40</sup>30  
Thermometer 70 in the Cabin 68 days out his Chronometer was 20 miles further west than mine. but I discovered an error of 12 miles in ours at the sand leads. by deducting that gives us 8 miles difference of Long. I will here remark that I found my Chron 1 minute & 20 seconds slow on my arrival at Colombo also by false Point Light House when bound to Calcutta. passed Roderique last night  
Friday 8<sup>th</sup> Sept 1848

Commences with fine breezes from E S E and pleasant weather saw nothing of the Barque we spoke yesterday, he steered off a little more than us. it was cloudy all the morning and we got no sight for the Long Lat by Obs 23-55 Long by acct — 59-51 Barometer 30-20 to 30 Thermometer 74 at noon we experience daily from 10 to 20 miles westerly Current nothing of importance to note. we have been at work two days on our old miz-top sail putting on new tacking, rope, reef bands and sheathing it. shall have to make it fast

## Amulet from Calcutta

Saturday 9<sup>th</sup> Sept 1848

Commences with light breezes from the  
N.E. and cloudy & continues cloudy through  
the night. wind veering from S.E. to East  
at 6 Am the wind hauled to E.S.E.  
set all the starboard studding sails ends  
light breezes and pleasant weather going  
4 knots. the Barometer falls some but the  
weather is very pleasant indeed at noon  
Lat Obs 24-31 Long Chron 58-20 Barometer 30-5 to 15  
Thermometer 75 in the Cabin. have seen but one  
vessel since we entered the trades. I feel rather  
lonely but try to enjoy myself as well as I  
can, sometimes reaching a book & then  
thinking of by gone days which can never  
be recalled, except we live them over again  
in imagination. what opportunities for  
contemplation has a Sailor. alone on the ocean  
if his Ship is gliding smoothly on her Course  
in <sup>the</sup> still night he traverses the deck contemplating  
the wonderful works of god and then his mind  
wanders far away to his childhood home & the loved  
friends he has left behind. and sometimes the thought  
occurs have we been to our friends all that we  
ought and have we never injured them intentionally  
if not then all is well. May our lives end well

towards Boston

Sunday 10<sup>th</sup> Sept

all this day fine breezes from the northward  
and beautiful pleasant weather. experienced  
12 miles southerly Current Lat by Obs 25-19  
Long Chron 66-55 Barometer 30-10 to 20

61 days out

Monday 11<sup>th</sup>

All this day fine breezes from North to NNE  
and beautiful beautiful weather so unlike  
that we have had since we have been  
out that I enjoy it very much although  
the ship does not go so fast

Lat Obs 26-02 Long Chron 65-27 Baromet<sup>20</sup> 30-40

62 days out

Tuesday 12<sup>th</sup> Sept

Commences with fine breezes from northward  
very pleasant weather latter part baffling  
airs & Calm with light rain squalls lowered  
the boat & scraped off the barnacles  
at 10-30 light breezes from S W and  
pleasant weather experience from 12 to 15  
miles southerly Current in 24 hours for the  
last 3 days Lat by Obs 26-28 Long 64-00  
Barometer 30-10 to 30

63 days out

# Amulet from Calcutta

Wednesday 13<sup>th</sup> Sept 1848

First part of this day fine breeze from the Southward and pleasant weather at 9. P.M. the wind hauled to SE set fore & Main top-mast & Main top of studding sails

latter part the wind from the East & rainy at 8 Am set lower studding sails experienced no current to day.

Lat by Obs 26-51 Long Chron 51-11

Barometer 30-30 to 35 Therm 72

84 days out

If this wind holds till we pass the Cape we shall be fortunate indeed. I sincerely hope it may or something equally as good or I am afraid we shall have an uncommonly long Passage home. I was in hope to have rounded the Cape in 56 days but we had a very tedious & long passage to the line. all most constant head winds and much bad weather down the Bay. but we expected that & got it to our hearts Content. if the other ships had as bad time down the Bay they cannot be far ahead of us. although they sailed 12 days ahead of us. we have had a good run from the line

# towards Boston

Thursday 14<sup>th</sup> Sept

Commenced with brisk breeze from the East and squally at 10 AM cleared off fine pleasant weather & steady fresh Breeze  
Lat by Obs 27-49 Long Chron 48-26 Bar 30-20 to 30

Friday 15<sup>th</sup>

Commenced with brisk breeze from the East & pleasant weather. Middle part Much lightning in the west & about 12 o'clock thunder at 5 AM took in the standing sails & royals at 6 o'clock a heavy squall from the SW furled top gallants & double reef'd top-sails at 9 o'clock close reef'd the weather looking very bad sharp lightning & heavy thunder No Obs  
Lat by acct 28-49 Long 46-30 off  
Madagascar 112 miles Bar 29-20

Sat 16<sup>th</sup>

First Part squally & Calm at intervals at 6 PM a fine breeze sprang up from south made all sails fine weather till 2 AM. saw lightning in the NW weather looking squally furled light sails at 4 PM squally & continued so until 8-30 o'clock ends strong gales from SSE & pouring clouds. Arrived on a strain like a race horse. Lat 28-59 Long 44-23 Bar 30-20 to 25

# Ship Amulet from

Sunday 17<sup>th</sup> Sept

First part fine fresh breeze from the S.E. and pleasant with passing clouds Middle & latter part moderate & fine weather. we have had a Current of 30 to 45 Miles to-day setting W & W. true, if the plate is marked right and I think it is not far out of the way I am very glad to find it so & hope it will continue until we round the Cape steering straight for the Cape. Recipe Large numbers of Cape Pigeons flying about albatross &c Lat by Obs 30-03 Long by Chron 41-24 Barometer 30-20 to 30 Therm 69

Monday 18<sup>th</sup> Sept

All this day fine fresh breeze & passing clouds smooth sea & good weather. one man taken sick with a violent pain in the Chest & applied a blister which soon relieved him No Obs Lat DR 30-50 Long Chron B H 38-45 Barometer 30-15 to 25 69, Days out, I can not tell whether we have had any current to-day or not. but must wait tomorrow's Obs (Ch) May this wind hold until we pass the Cape and we shall be fortunate indeed. Wind latter part East

# Calcutta towards Boston

Tuesday 19<sup>th</sup> Sept

Fresh fine breezes from the East and  
piping clouds Barometer falling from 30-10  
to 29-90 Ends squally with rain wind  
inclining Northerly Lat DR 31-44 Long Chron  
brought forward 34-57 I have allowed 24 miles  
current NBS saw a sail astern steering  
about NBN. ourselves steering NEN  
at 12 furled topgallant-sails. weather  
looking bad. hope we are not going to  
have Westerly winds to counteract with

70 days out from Sand Heads

Wednesday 20<sup>th</sup> Sept

Commences with strong gales from the  
NE and dark cloudy weather at 7 P.M.  
a heavy bank in the NW lightning in that  
direction & distant thunder. Barometer falling  
fast. close reefed top sails furled Main sail  
& Jib. through the night heavy squalls  
with a deluge of rain at 10 P.M. the wind  
hauled to Northward. at 3 Am Came out  
NNW & continued to haul to Westward  
at 7 do Wore to N by W Ends moderate  
Barometer rising. Lat Obs 32-18 Long Chron 34-50  
have not experienced any current this 3 days.  
Barometer 29-70 to 75.

## Anulet from Calcutta

Thursday 21<sup>st</sup> Sept

First part brisk breeze S W and pleasant weather. Barometer rising, at 10 P.M. Calm & remained so until 10 Am when a light breeze sprang up from N E Ends fine breeze & pleasant beautiful weather. No current. lowered the boat this morning & scraped off the remainder of the Barnacles  
Lat by Obs 31-57 Long Chron 34-28  
Barometer 29-96 to 30-16

Friday 22<sup>nd</sup> Sept

Strong breeze & pleasant weather going 8 1/2 knots W B N per comp. at 7 Am Wind hauled to S W strong gales & cloudy, double reefed top sails & wore to N W at 10 Am. Ends strong gales S W sky broke in  
Lat Obs 32-57 Long Chron 31-47.30  
Barometer 30-16 to 30-00

73 days out. — ok!



towards Boston 1848

Saturday 23<sup>rd</sup> Sept

Commences strong gales S W and cloudy  
Middle part moderate heavy dense clouds  
& lightning all along in the South & S W  
at 5 P.M. saw a Ship on our weather bow  
this morning she was one point on our lee  
bow through-out a very heavy swell from  
the S S W heading W by N then north  
& still making northern we have only made  
45 miles by log but we have made 56 by Obs  
we have had a west Current 26 Miles the swell  
is the Cause of her making northern

Lat by Obs 32-54 Long Chron 30-27 Bar 30 to 30-10  
74 days out from Sand heads

Sunday 24<sup>th</sup> Sept

Commences light breezes from the S E and  
fading clouds at 10 P.M. squally furl'd top  
& main sail wind East. at 12 Midnight  
very squally with sharp lightning. thunder  
& much rain close reef'd top sails wind  
S E and a heavy swell from S S W heading  
her off No Obs Lat by acct 33-21 L C by  
28-22 Bar 29-90 to 30-10 I allow 24 miles  
Current N B S true. steered West per  
Comp through-out 30 Miles from the  
Coast steering N B S

Amulet from Calcutta

D Sept  
25<sup>th</sup>

strong breeze SSW and dark cloudy weather with much rain at 6 Am Cleared off fine weather made all sail by the wind a brig in Company steering NW by N ourselves steering west. at 5 P.M. sounded <sup>120 fath</sup> no bottom at 12 Mid - night sounded no ground 96 fath I find by good Obs that we have had a Current of 92 miles the last two days setting N 37 South and am very happy to have it so. Caught a Cape Pigeon & 300 galls Water & killed a hog weighing 150 lbs these are the principal events of the day. Myself a very bad headache Lat by Obs 34-18

Long Chron 26-5-7 Barometer 30 to 30-16

26<sup>th</sup>

76 days from the Sand heads light airs from the South & fine weather at 4 P.M. spoke the British brig John scott 46 days from Madras for London via the Cape. through the night light airs & Calm at 4 Am light breeze from NN all sail set by the wind at 10 do strong breeze NW by N furled top galls & outer Jib at 11-30 do double reefed top - sails. find the Current these 24 hours

towards Boston Sept 1848

26th Continued

Lat West 36 miles by Chron & Obs  
Lat Obs  $35^{\circ} 32'$  Long Chron  $25^{\circ} 40'$  Barometer  
falling from  $30.00$  to  $29.85$  there is 22 miles  
difference in the Brig's Long & ours, we  
are west of him, and I believe he is wrong  
Sounded at 8 PM no ground 120 fathoms  
Perpendicular 77 days out.

27<sup>th</sup> Sept

All this day strong gales from the  
Westward & squally at 8 Am close reefed  
topsails & furled mainsail at 4 PM set  
mainsail. saw nothing of the Brig that  
was in company yesterday. Lat Obs  $35^{\circ} 16'$   
Long Chron  $25^{\circ} 08'$  Barometer  $29.80$  to  $29.90$

78 days out Sand Heads

Myself unwell, all most a constant headache  
and bilious, no appetite &c. but these are the  
ills which man is heir to.

28<sup>th</sup>

First part strong gales & squally, at 8 PM  
sounded no ground 120 fathoms, through  
the night light baffling airs & a turbulent  
sea with frequent rain squalls at 3 Am  
squally wind S W by S set single reefed  
topsails

Ship Amulet from Calcutta

28<sup>th</sup>

Contn at 7 AM the wind inclines to S E  
at 9 do Cleared off pleasant. fine  
fresh breezes made all said Ship  
rolling & pitching very bad. find  
that we have had a N by S Current  
30 miles these 24 hours. by Obs &  
Arrow. which accounts for the very  
Confused sea which agitates the  
Ship so much Lat by Obs 35-14 Long  
Chron 22-45 Barometer 29-90 to 30-36  
she is up higher today than I have 1847  
seen her since we left Boston 20<sup>th</sup> Nov  
79 days out

29<sup>th</sup>

Sept strong breezes and fine weather  
at 10 PM Calm & remains so throughout  
40 miles Current S W at 7 AM  
sounded in 100 fathoms gravel & shells  
Lat by Obs 35-41 Long Chron 21-35  
Barometer 30-46 to 30-30  
80 days out

towards Boston 1848

30<sup>th</sup>  
Sept

Comences with a Calm. at 7 P.M. a light breeze from S.E. set studding sails both sides light breezes and pleasant weather at 12 mid-night sounded 70 fathoms green sand. black specks & shells broken studd N.W. till 8 Am kept N.W. & N at 7 Am sounded in 55 fathoms sand & shells. smooth sea going 4 knots. Lat by Obs 36-28 Long Chron 20-02 Barometer falling from 30-30 to 30-00 the weather continues fine. probably being in the vicinity of Land has an effect on her. Cape Aquidnas bears North about 30 miles off if the Chron is correct

Oct 1<sup>st</sup>

81 days out

Breeze from the S.E. and pleasant weather at 4 P.M. grain point bore N.N.E. & E per Comp dist about 20 miles at 11 do squally double reefed topsails at 5 Am weather more settled set all sail studding sails out on both sides Lat by Obs 34-51 Long Chron 17-48 Bar 29-90 to 30-00 if that was grain point yesterday the Chron is correct by the last Edition of the Epitome. Floresburg is 21 miles East of that

## Amulet from Calcutta

Monday

2<sup>d</sup> Oct

All this day gentle breezes from the S & E and beautiful pleasant weather. at 4 P.M. saw the high land of the Cape bearing E N E per Comp a great distance off. had it not been very clear we should not have seen it. we was 48 miles from it at 12 by Chron & Alts. being cloudy in that direction could not see it. at 5 Am saw a sail on our starboard quarter but soon left him behind could not make her out. Lat by Alts 33-59 Long Chron 16-06

Bar 30- to 30-15 \$3 days out the Cape is rounded & now for St Helena.

Tuesday

3<sup>d</sup> Oct

Fine breezes S & E and pleasant weather at 2 Am light airs succeeded by a Calm. & continues until 8 Am. light breezes from S W and passing clouds hauled in the lower studding sail kept N by W at 11-30 Am wind in chace southerly again fine & smooth sea & beautiful beautiful weather indeed. hope to be in Boston in 50 days if we have good winds. May prosperous gales attend. is the fervent desire of your humble servant. Lat 33-03 Long 14-40 Bar 30-10 Thermometer 62

towards Boston Oct 1848

Wed  
4th Oct Commences with light breezes from S W  
and pleasant; Middle part the wind  
incline to Westward; at 12 midnight  
took in the studding sails & braced up  
heaving N by E to N N E Moderate breezes  
& fine weather. Continues the same  
throughout the day. Lat by Obs 31-38  
Long Chron 13-32 Barometer 30-10 Therm 52  
86 days out

the work on board the ship seems to go very  
hard, the most miserable set of men that  
I ever saw in my life. and the Mate has  
neither pride, nor ambition, & is quite  
ignorant of a ~~work~~ officers duty. I have tried  
to teach him all I could but he would not  
learn I asked him once in his watch below  
if he would like to work the trine. he replied  
if I wanted him to he would. I told him  
it would confer no favour on me by his  
doing so. I have to plan all & frequently set  
the men about their work and he seems  
pleased to have me do so. how he can  
endure (that) I know not. the most  
careless wasteful man I ever saw.  
if he saw a man cutting wood on deck  
he would not tell him to stop.

# Ship Arrivet from Calcutta

5<sup>th</sup> Oct

All this day moderate breezes from West to South and pleasant. though cloudy weather at 7 P.M. set all the Caracal studsails. I think we have had a N.W. Current to day of 36 Miles. according to the plate we have had more, but I think she has overrun the Log. Lat by Obs 30-33, Long by Chron 11-49. Barometer 30-10 to 11- Thermometer 54. 86 days out from Sand heads blow ye prosperous breezes and waft us gently to the shores of New England.

"New England my Country my home  
I long to behold thee again. thy cliffs  
breasting out to the foam of the wild  
and tempestuous main." but I think  
I will not copy any more poetry just now  
for I am not in a very poetical mood



towards Boston Oct 1848

6<sup>th</sup>  
All this light heaving Wind from  
SE to West and passing clouds  
Lat by Obs 29-56 Long Chron 10-25  
Barometer 30-10 87 days out

7<sup>th</sup>  
All this day fine Breeze and pleasant  
latter part Wind SE and a heavy swell  
from the westward ship rolling very bad  
Lat by Obs ~~27-46~~<sup>28-52</sup> Long Chron ~~7-07~~<sup>9-28</sup> Bar 30-20  
88 days out Sand Heads

8<sup>th</sup>  
All this day much the same as yesterday  
Nothing of importance transpired  
Lat by Obs 27-46 Long Chron 7-07 Bar 30-20.

9<sup>th</sup>  
All this day fine breeze & pleasant weather  
a heavy swell from the Westward ship  
rolling very much Lat 26-43 Long 5-22  
Bar 30-20 90 days out

10<sup>th</sup>  
This day much the same as yesterday  
Lat 25-29 Long 3-37 Bar 30-10 to 20

11<sup>th</sup>  
All this day fine breeze and pleasant the  
clouds most of the time clear at noon  
however Lat 24-13 Long 1-56 Bar 30-10 to 20

Ship Amulet from Calcutta

12<sup>th</sup>

All this day fine trades and pleasant weather, a heavy swell from the Westward. the Ship rolling. decks wet all the time  
Lat by Obs 22-55 Long by Chron 00-12<sup>o</sup> Bar 30-10 to 25

93 days from the Sand Heads

13<sup>th</sup>

All this day fine trades and pleasant though cloudy Lat by Obs 21-24 Long 1-26

94 days out

14<sup>th</sup>

All this day fine trades and cloudy  
Lat Obs 20-00 Long Chron 2-37

95 days out

15<sup>th</sup>

All this day fine trades foggy throughout sun shines through at intervals

Lat Obs 18-26 Long Chron 3-5-4

16<sup>th</sup>

All this day fine trades & foggy  
Lat by Obs <sup>with</sup> 16-43 Long D R brought forward 4-5-9

97 days out

towards Boston Oct 1848

17<sup>th</sup>

Comme was fine breeze & foggy yesterday. Let  
was but an indifferant one got an indifferant  
sight for the Chron at 4 P.M. long 6-20. steered  
N or N till 8 o'clock then N N by N till 12 midnight  
then hauled up N or N the clouds being rather  
more broken at 04-30 Am made the Island  
of St. Helena bearing from N by N to N by E  
at 2-30 Am the SW point of the Island bore  
N or E per Comp dist 6 to 10 miles but it soon  
shut in again foggy. saw no more of it. a  
Barge in Comp this morning steering the same  
as ourselves N or N by N but rather lagging  
behind if we have had no current I think  
the Chron is 10 to 15 miles too far N. S. but I  
thought as we passed the Island there was  
some current on the water but if we get a  
good Alo tomorrow we can ascertain that  
Lat by Alo 16-42 Long Chron 6-44

98 days out

Ship Amulet from Calcutta towards

18<sup>th</sup>

All this day brisk trades & foggy & cloudy  
pleasant weather. very cool & comfortable  
Ship going 5-6 knots saw a large  
school of sperm Whales

Lat Obs 14-38 Long by Chron 8-27

19<sup>th</sup>

no sight for Chron 99 days out

Brisk trades and cloudy most of the time  
rolling water about most of the time.

No chance to paint outside nor in us  
yet Lat Obs 13-38 Long Chron 10-37

100 days out

20<sup>th</sup>

Fine brisk trades and continues cloudy  
the Amulet is doing all she can but  
we have got horrid helms men  
the worst men to steer that I ever  
saw in my life and there is only three  
that can do a job of work at all.

Lat by Obs 12-39 Long by Chron 12-31

101 days out

21<sup>st</sup>

All this day strong trades and cloudy

Lat Obs 11-33 Long Chron 14-58

102 days out

Boston Oct 1848

22<sup>nd</sup>

All this day brisk trades and pleasant weather  
nothing of importance transpired on board

Lat by Obs 10.23 Long by Chron 17.14 West  
103 days out

23<sup>rd</sup>

All this day brisk trades and pleasant  
though cloudy Lat Obs 9.23 Long Chron 18.55

104 days out

24<sup>th</sup>

All this day moderate trades & fine weather  
not so cloudy as it has been

Lat 8.33 Long by Chron 20.36

105 days out

25<sup>th</sup>

All this day fine trades & beautiful pleasant  
weather saw very large schools of flying fish  
No vessels in sight since we passed St Helena

Lat Obs 7.15 Long by Chron 22.19

106 days out from Sand Heabs

26<sup>th</sup>

All this day fine trades and pleasant weather  
at 2 P.M. saw a Brig standing to southward  
at 6 do saw a Barque steering south at 11 AM  
saw another Brig standing to southward  
passed too distant to make any of them out

Lat by Obs 5.56 Long by Chron 24.13

107 days out

Ship Amulet from Calcutta towards

Oct 27<sup>th</sup>

All this <sup>day</sup> fine trade and pleasant weather  
saw several vessels standing to southward  
Could not make them out but by Obs 4.29  
long by Chron 25.55 118 days out from the Sand Heads  
Oh! what wretched, unthoughtful, uncharitable,  
being Seaman are. a day or two ago they came to  
the Mate and said that the Provisions were  
not good enough and that they could not eat  
it. the provision is all of the best quality  
and there has been none opened but what  
was good as any Beef could be on a long voyage.  
it seems as if they thought that I could procure  
provisions at any moment when I saw fit.  
but that is not the Case, I instead of possessing  
the Character which is generally attributed to  
them. of being the most generous, philantropic  
& humane portion of society. they are the most  
evil minded, ill thinking, & lazy set of beings  
in nature. I do not mean to say that there are  
not exceptions, there are a few that are worthy  
and honest. but judging from what I have seen  
of them, and I have not seen a little, they are  
few very few, in comparison to those which I have  
described. the question then arises how are they to  
be made any better. in the first place it is my  
opinion advancing them money before they earn it

Boston in the Year 1848

should be done any. 2<sup>d</sup>ly there should be a stipulated penalty for drunkenness. while in port and attached to a ship. 3<sup>d</sup>ly a man should never be permitted to leave a ship without a written or printed permission from the first Officer. 4<sup>th</sup> there ought to be a regular allowance for them. provided by law which should be sent out weekly. then I think we should get along more comfortably than we do at present

29<sup>th</sup>

All this day light trades and very warm weather at 2 P.M. Exchanged signals with a Dutch Barque steering South saw also a Brig standing to Southward but could not make her out Lat by Obs 3, 25 Long by Chron 27, 22. 109 days Out

29<sup>th</sup>

All this day light trades and pleasant weather saw several vessels standing to South. Could not make them out Lat by Obs 2-28 Long 28, 29 Therm° 44  
110 days Out. ok!

## Ship Annulet from Calcutta

Oct 30<sup>th</sup>

All this day light trades and pleasant weather saw two Ships standing to Southward. Nothing of importance to note Lat by Obs 11.30 South Long by Chron 29.32 West  
are hounded and Eleven days out

Oct 31<sup>st</sup> All this day light trades and fine weather. saw a Sail in the Morning standing to South. saw several dolphins Caught none for the want of a pair of grains. one of the Men lost ours overboard on the passage out. Lat by Obs 00.38 South Long 30.53 112 days out

Nov 1<sup>st</sup> All this day fine trades and pleasant weather saw no vessels today. crossed the Equator at 10 last night 122 days 2 hours from Calcutta. 112 days 2 hours from sand heads a shocking long passage. but we had a very hard time in the Bay Bengal and was 40 days to the line. but I wont Complain for we have had a fair run since then we are 72 days since we Crossed the Equator in 9<sup>th</sup> E Long Lat by Obs 00.50 North Long by Chron 32.09 West  
113 days out. Incl all is well.

the Annulet is not the Ship to make a short passage with the spars that she has on.



towards Boston

Although I still Contented that she would sail better than half the Ships of her kind if she was sparred properly. in the first place our lower yards are 10 ft shorter than they should be according to the rule of sparring Ships. and all the other Yards in proportion. how do you suppose a man can make a short passage situated thus. no man of a sane mind could for a moment think of it. our standing sails are as large as they can possibly be. they are 6 ft square on the head than the old ones I am sure it would pay the owners to put ~~new~~ <sup>long</sup> spars and alter the sails if she was coming to India again at all events I shall advise them to do it

2<sup>nd</sup> Nov All this day light trades and pleasant weather wind steady at S.E. sailed to day 100 Miles on a N.W. Course nothing unusual transpired on board. Myself in better health and spirits than I have been since we passed the Cape. I know not what is the matter. but I think it is principally the Jaundice with a touch of Liver Complaint. I have left off chewing tobacco entirely since I passed the Cape and I think I have done right in so doing. I smoke a cigar occasionally but not nigh as often as I have been in the habit of doing Lat by Obs 2:08 Long by Chron 33.25  
114 days out

## Ship Anulet from Calcutta

3<sup>rd</sup> Nov

All this day steady trades and pleasant weather  
wind S.E. Nothing of importance transpired  
Lat by Obs 3.30 Long by Chron 34.49

115 days out

4<sup>th</sup>

All this fine Breezes and pleasant weather  
there has been more wind to day than yesterday;  
but she has not made so much by 20 miles  
as she did yesterday. I cannot account for it  
it is true the wind has been right apt to day  
and the sails have not drawn so well but  
that might not make so much difference  
surely there can be no Easterly Current  
here. it is a mystery and I cannot solve  
it. Lat by Obs 4.40 Long by Chron 36.46

116 day out

5<sup>th</sup>

Commences with fine Breezes from S.E.  
and pleasant at 8 PM happens light winds  
and much rain & continues squally throughout  
No Obs Lat by DR 5.41 Long Chron 37.47 36.38

117 days out

6<sup>th</sup>

All this day light breezes varying from East  
to S.E. and frequent rain squalls  
struck two Porpoise's and lost them  
one parted the bowline one the iron screw  
all the water we caught during the rain  
was about 100 Gall

towards Boston in November 1848

Nothing of importance transpired to note.  
No vessels in Company. I am anxious to get in.  
and am tired of being so long at sea. but  
shall not complain so long as our present  
good winds remain. No Obs Lat  $38^{\circ}37'$   
Long Chron.  $bt. pd. 37^{\circ}24'$ . 118 days at sea

7<sup>th</sup>

All this day baffling winds from East & S E and  
frequent rain squalls Lat by Obs  $38^{\circ}02'$  Long by Chron  $34^{\circ}58'$   
119 days out

8<sup>th</sup>

All this baffling winds from South to East  
and squally with rain <sup>Lat</sup>  $37^{\circ}41'$  Long by Chron  $35^{\circ}30'$   
120 days out

9<sup>th</sup>

Commences with light baffling winds and cloudy  
middle & latter part fine breezes from E & N E  
& passing clouds Lat Obs  $37^{\circ}25'$  Long Chron  $40^{\circ}10'$   
121 days out

10<sup>th</sup>

All this day fine N E trades and pleasant.  
all hands painting ship. but she heaves the  
water so much that we shall not get it done  
well I fear. I deferred painting until we finished  
tarring. I am in hopes to get through the worst  
of it to day. Lat by Obs  $37^{\circ}17'$  Long Chron  $42^{\circ}07'$

# Ship Amulet from Calcutta

11<sup>th</sup>

All this day fine N<sup>E</sup> trades  
light showers during the night  
Lat Obs 13<sup>o</sup> 02 Long Chron 44<sup>o</sup> 16  
123 days out

12<sup>th</sup>

All this day fine N<sup>E</sup> trades and pleasant  
weather Lat by Obs 14<sup>o</sup> 40 Long by Chron 45<sup>o</sup> 53  
124 days out

13<sup>th</sup>

All this day light breezes and pleasant  
weather wind veering from N<sup>E</sup> to S<sup>E</sup>  
Lat Obs 16<sup>o</sup> 01 Long Chron 47<sup>o</sup> 13 Barometer 30.00  
Therm<sup>o</sup> 86<sup>o</sup> dull humid atmosphere 125 days

14<sup>th</sup>

125 days out  
All this day light winds veering from N<sup>E</sup>  
to S<sup>E</sup> and pleasant weather painting ships  
inside masts &c. we have had no chance  
to paint out side since we left Calcutta  
there has not been a day but what she has  
set herself up to the planks hear. we have  
managed to get most of our work done  
such as making, and repairing, sails. & have got  
the rigging turned in, rattled & tared down.  
but our officer. goes about it in such a manner  
that it is positively disgusting. last eve I went  
on deck he had been painting masts. and the  
deck was nearly covered with white paint  
they had dropped. it did not seem to give

towards Boston Nov 1848

him any measures he did not seem to observe that there was anything out the way in that at all. it is now 9 o'clock and they have been all the morning scraping off & getting ready to paint lead Colour. the harnesses & Pump &c are most beautifully speckled and it is only a day or two since they were painted. Now it is impossible for me to be on deck and attend to the work altogether. I did it last voyage as I had not much to do. and things went on pleasantly enough. but now he is too slack altogether. to look after the men and keep them in their places but as soon as they get sandy he comes running to me these chaps wont do as I wish them. I go and give them a lecture, they say he tells them to do a job. but will not tell them how to go about it. or how he wishes to have it done. and if it is not done to suit him, send some body else without saying any thing. he appears to me not to see any thing, nor hear any thing, and his tongue is tied but for. whistling. humming some sailors song. or gabble. there is one of these going on from morning to night generally. sometimes I mention that he is setting a bad example. when he generally consents I have moulted his <sup>and remains on the deck a day or two</sup>

Journal of Ship Amulet from

Wednesday  
15<sup>th</sup>

All this day light trades veering Considerable  
from N.E. to S.E. pleasant weather heavy  
swell from N.E. a Ship in Comp  
steering to Mr West. a long distance off  
could not make him out. Nothing of  
importance to Communicate  
Lat by Obs 18.13 Long by Chron 49.16  
127 days out

Thursday  
16<sup>th</sup>

All this day light trades and pleasant  
weather Came up with the Bark that  
we saw yesterday during the night he  
set his bergu and I read it Anne  
Lat by Obs 19.07 Long by Chron 50.19  
128 days out

Friday  
17<sup>th</sup>

Commences with light breezes and squally  
at 4 P.M. was boarded by the Chief Officer  
of the Whaling Barge Anne of Bristol. R.I.  
3 years & 4 Mos out. 850 Bush Sperm oil.  
bound home leaky. exchanged papers  
with him he touched at St. Helena 16<sup>th</sup> ult  
got English papers July 10<sup>th</sup> the papers speak  
of awful troubles in France and they intimate  
in one place that the U. States are at peace  
with Mexico. that was about all the  
intelligence I could glean from them

Calcutta towards Boston Nov 1848

Middle & Letter part nearly Calm. very light  
breezing airs at intervals from North to S E  
we are now where the trade wind ought  
to be the strongest, and have continual  
light breezing winds & Calms. did any man  
Ever have such a time. Ah yes yes yes  
worse than this so I won't complain  
for it will do no good and will do some  
harm. I will endeavour to bear it  
patiently, the whaler seems to take it far  
easier than I do but he is differently  
situated however

Lat by Obs 19.60 Long Chron 51.36  
129 days out

Saturday  
18<sup>th</sup>

Commenced with light airs from N E at 4.30 P.M.  
light air S E at 8 do lightning in the Northward  
at 10 do squally Wind S W Continued squally  
throughout at 12 Midnight double reefed  
top-sails. Myself unwell not able to go on  
deck. they were one hour & a half about it.  
the Mate said they thought it was no use  
to reef and therefore worked as slow as  
possible. some of them were insubmit to the  
Mate. one Rufus Beale when he told the water  
to go below. said to the Mate. you dont pay so

Journal of Ship Amulet from

Another one an Irishman I should think, by birth, who goes by the name of Jack signed Articles John Williams, made up by that he thought it was time, they are neither of them seamen. but both appear disposed to make all the trouble they can especially Jack who is always ready to make a noise when he can get any one to assist him.

Lat by Obs 20.24 Long by Chron 52.15 Barometer 29.90  
130 days out

Sunday  
19<sup>th</sup>

All this day light baffling winds & much rain Lat by Obs 21.13 Long Chron 53.13  
Barometer 29.85 to 95. 131 days out

Monday  
20<sup>th</sup>

Commences with light baffling winds and frequent rain showers. at 5 P.M. squally with heavy thunder sharp lightning and a deluge of rain. took in all the light sails. the wind hauled to N.E. looking very bad indeed, with sharp lightning all around, and heavy thunders. double reef'd topsails & furled the Main Course, through the night hard squalls at intervals wind hauling very often North to S.E. and back again. at 9 P.M. cleared off wind E.S. & set whole top sails



Calcutta towards Boston 1846

and top-gallant sails. Ends strong breeze  
and Clauchy with a heavy swell from N.E.  
Lat by Obs 22<sup>o</sup> 12 Long by Chron 64<sup>o</sup> 41

Barometer 29<sup>o</sup> 90 to 30<sup>o</sup> 00 132 days out  
May the good wind continue which is the  
wish of your humble friend.

Tuesday

132 days out

21<sup>o</sup> Dec Commences with brisk breeze from East and  
squally. at 10 P.M. cleared Middle & Latter part  
fine breeze and passing clouds. am in hopes to  
to have a few days steady wind and weather.

Lat by Obs 23<sup>o</sup> 34 Long by Chron 65<sup>o</sup> 26 Bar 29<sup>o</sup> 90 to 30<sup>o</sup> 00

133 days out

Wednesday

22<sup>o</sup> Dec

Commences fine breeze from East and  
pleasant weather. Middle and Latter part  
light winds inclining to South. finish  
repairing our sails. Lat by Obs 24<sup>o</sup> 42

Long Chron 67<sup>o</sup> 53 Barometer 30<sup>o</sup> 10

134 days out

Thursday

23<sup>o</sup> Dec

All this day light baffling airs and  
fine weather. Latter part wind West.

Lat by Obs 25<sup>o</sup> 14 Long Chron 68<sup>o</sup> 43 Bar 30<sup>o</sup> 10

135 days out

Journal of Ship Ancelet from

Friday 24<sup>th</sup>

Commences with light breeze from the Westward and light rain squalls. at 4 PM the wind inclines to Northward, tacked to westward, at 10 do wind N E fine breezes and pleasant weather set the studding sails. ends fine breezes and pleasant weather; with Considerable swell from the Westward, at 10 AM saw a Brig steering to Eastward could not make her out — Lat by Obs 26.15 Long by Chron 50.06 Barom 30.10 to 20  
136 days out

Sat 25<sup>th</sup>

Commences with fine breezes from N N E and pleasant weather Middle & latter part the wind inclines to East with fine weather Lat by Obs 27.22 Long Chron 61.36 Bar 30.14 to 25 137 days out

Calcutta towards Boston Nov 1848

26<sup>th</sup> Nov

All this day fine breeze from the  
SE and pleasant weather. killed  
a pig, a very fine one indeed. Lat by Obs 28.33  
Long by Chron 52.43 Barometer 30.20  
138 days out

27<sup>th</sup>

Commences with fine breeze from SE and  
pleasant weather Middle part <sup>with</sup> from  
South to SW and pleasant. Latter  
part wind inclining to westward, and  
approaching to a Calm. at 10.30 Am  
hauled in standing sails and braced up,  
at 9 Am saw a Berque, steering to  
NE. Lat by Obs 29.48 Long Chron 54.15  
Barometer 30.15 139 days out

28<sup>th</sup>

Commences Calm with rain at 10 P.M. light  
breeze from NE and continues until 8 Am  
Ends heaving winds and much rain

No Obs Lat D R 30.27 Long by Chron. B. S.  
54.53 Bar 30.15 to 30. 140 days out.

and all is well. hope it will end well.  
hope we may have a good run after  
we cross the Gulph.

Journal of Ship Amulet from

29<sup>th</sup> Am commences strong gales from W & S  
and squally at 1 P.M. double reef'd  
top sails & furled the mainsail at 6 do  
close reef'd & reef'd the foresail  
through the night heavy gales & squally  
at 2 Am split the foresail Ends  
heavy gales & squally weather  
Lat Obs 30.56 Long Chron 67.07  
Barometer falling 30.00 to 29.83. at 12 midy  
29.90 141 days out

30<sup>th</sup> Commences heavy gales & squally wind  
NNE to North middle part clears  
at 6 Am set double reef'd top sails  
Fk & spanker latter part moderate  
set single reef'd top sails  
saw an american Ship steering  
East Lat by Obs 31.06 Long Chron 68.45  
Bar 29.95 to 30.10. 142 days out

Calcutta towards Boston Nov

1st Dec

All this day fine breezes from Northward and pleasant though cloudy weather. at 8 P.M. Made all sail by the wind. at 1 P.M. saw a Barque steering to Eastward, sent down fore & mig Royals. Main top gallant to triclinsails &c  
Lat by Obs 31.37 Long by Chron 70.52  
temp<sup>r</sup> Water 70 Barometer 30.10 to 30.16

143 days out

Dec  
2nd

Commenced with light breezes from the N.E. and pleasant weather. Middle part light baffling airs from the Eastward. Latter part fine breezes from the South and pleasant weather. sent our best sails. Lat by Obs 32.65 Long by Chron 71.43  
temp<sup>r</sup> Water 69 Barometer 30.16 to 30.10

144 days out

Journal of Ship Anulet from

Dec 3<sup>d</sup> Commences with fine breezes from  
the Southward and pleasant  
weather, at 3 P.M. passed a Ship  
with a white waist standing by the  
wind to S Westward, he hailed, but  
could not understand what he  
said, were passing too quick, at  
10.30 do wind came out at WNW  
in a squall took in studding sails  
Main Royal top gallants & Double  
reef'd topsails, at 4 Am cleared off,  
at 6 do set single reef'd topsails,  
latter part wind moderates and  
inclines to NWN at 10.30 Am  
set top gallantsails at 11.30 do tacked  
to West, saw a Schooner steering South  
Lat by Obs 34.39 Long by Chron 71.39  
temp't Mer 70 Barometer 30.10 to 30.28  
145 days out

Calcutta towards Boston Dec 1848

4<sup>th</sup> Dec

Commences with fine breezes from Northward  
and pleasant weather. Middle & latter part  
light air from NE and pleasant beautiful  
weather. Saw several vessels steering South  
one ship painted with a white & a red streak  
around her Lat by Obs 35° 01 Long by Chron 72° 17  
temp<sup>t</sup> Water 69 Barometer 30.23 to 30.40

146 days out

5<sup>th</sup> Dec

All this day light breezes from the SEward  
and pleasant weather passed Schooner  
Lulatt of Sedgewick he was thirty miles  
East of us by allowing our Chron 20 <sup>miles</sup> too  
far East which I discovered at St  
Helena that makes our Chron 50 miles  
too far East but that remains to  
be proved Lat by Obs 35° 51 Long Chron 72° 52  
temp<sup>t</sup> Water 69 Barometer 30.40

147 days out

Journal of Ship Amulet from

Dec 6<sup>th</sup>

All this day light breezes from the Southward and pleasant weather temp<sup>t</sup> Water 59° at 8 P.M. Came into the Gulf temp<sup>t</sup> Gulf water 73° at 11.30 A.M. Came out the Gulf temp<sup>t</sup> Water 56° saw 3 vessels standing by the wind to N.W. Lat by Obs 37.19 Long by Chron 73.18 Bar 30.40 to 30.25  
148 days out

Dec 7<sup>th</sup>

All this day light breezes varying S.W. to West and pleasant weather. saw a Bark standing the same as ourselves. to N.E. Eastward. temp<sup>t</sup> Water from 58 to 60° not quite so cold as it was when we first came out of the Gulf. Lat by Obs 38.48 Long by Chron 72.40 Barometer 30.25 to 30.13. about.  
149 days out Hand heads,



Calcutta towards Boston Dec 1848

Dec 8<sup>th</sup>

All this day brisk breezes from S W  
first part foggy. latter part tolerably clear.  
a Bark in Company steering to N E.  
Lat by Obs 40<sup>o</sup> 24 Long by Chron 71<sup>o</sup> 06  
Barometer 30<sup>o</sup> 13 to 29<sup>o</sup> 96

9<sup>th</sup> Dec

150 days out

Commences with fine breezes from the S W  
and good weather at 6 P M Sounded in 23  
fathoms fine sand at 8 do Sounded in 12 fathoms  
on South Shoal at 10 do 22 fathoms sand shells  
at 2 Am in 25 fathoms coarse sand & broken  
at 3 do in 12 fathoms near the fishing rip  
sand & gravel at 4 Am hauled up 400 m  
when the wind headed her off. Ends  
strong gales from N W and clear  
Lat by Obs 41<sup>o</sup> 36 if we were on fishing rip  
the Chron is 35 miles too far west but I am  
not certain of that Long Chron St. Helena  
Rate 69<sup>o</sup> 12 Barometer 29<sup>o</sup> 96 to 30<sup>o</sup> 10

## Journal of Ship Amulet

10<sup>th</sup> Dec Commenced strong gales from  
N.W. and clear at 4 P.M. the wind  
inclined to North tacked to west  
at 4 P.M. made Cape Cod at  
12 noon. Race point light bore South  
4 miles dist. at 3 P.M. spoke  
a Boston Pilot vessel she had  
no Pilots on board hauled off  
wind S.E. and much rain. at  
6 P.M. Scituate Light bore South  
dist 8 miles Ends light winds  
from S.E. and very thick weather

11<sup>th</sup> Dec

at 6 Am fine breeze from west  
& good weather at 7 Am tacked  
off Thatchers Island at 10 do  
tacked off Scituate at 12.30  
P.M. Mr. Morse pilot came  
on board. & took charge without  
the limits. we shall have to pay  
20 per cent dist money.

from Calcutta towards Boston

Journal of Ship Amulet from

- 21<sup>st</sup> Jan Fine breeze from N W and pleasant weather at 11 AM pilot came on board made sail at Rowes Wharf and proceeded to sea with all hands on board Bar 30.10
- 22<sup>nd</sup> Fine breeze from North and pleasant at 11 PM Cape Cod light bore N W per Comp dist 12 miles. No Obs this Day Lat by Acct 40.47 Long by Acct 68.41  
Bar 30.16 temp<sup>t</sup> Water 46° to 56°
- 23<sup>d</sup> Fine breeze N W and pleasant. though cloudy No Obs at 12.30 PM came into the Gulf temp<sup>t</sup> Water 71° at
- 24<sup>th</sup> Fine breeze N W and pleasant though cloudy the pilot part at 12.30 PM came into the Gulf. temp<sup>t</sup> Water 71° at 6 AM out of the Gulf temp<sup>t</sup> Water 66° about Lat by Obs 35.20 Long Chron 70.16  
Barometer 30.35 3 days out
- 25<sup>th</sup> Light air from S W and pleasant weather Lat by Obs 34.49 Long Chron 70.02  
Barometer 30.40

Boston towards New Orleans 1849

26<sup>th</sup> Commences light breeze S W and pleasant latter part cloudy at intervals no sight for Chronometer Lat Obs indifferents 33<sup>o</sup> 48 Barometer 30<sup>o</sup> 26

27<sup>th</sup> strong winds from South. Lat 32<sup>o</sup> 56 Long 81<sup>o</sup> 52

28<sup>th</sup> Commences strong gales from S W and cloudy at 2<sup>o</sup> 30 P.M. double reef'd topsails appearance of the <sup>wind</sup> coming to North at 3 wore ship to S W the hauling round to North at 4 do made all sail through the night squally at 12 midnight furled topgallants Ends fine breeze from N E and pleasant weather Lat Obs 31<sup>o</sup> 40 Long Chron 80<sup>o</sup> 09 Barometer 30<sup>o</sup> 05 to 30.20  
3 days out

29<sup>th</sup> Commences fine breeze from N E and pleasant Middle part wind inclines to Eastward Ends light breeze S E and fine weather Lat Obs 29<sup>o</sup> 54 Long Chron 82<sup>o</sup> 11  
Barometer 30<sup>o</sup> 20 to 30<sup>o</sup> 30 8 days out

Journal of Ship Amulet from

Jan 31<sup>st</sup> All this day light breeze from S W  
and pleasant weather Lat by Obs 29.18  
Long by Chron 73.18 Bar 30.30

31<sup>st</sup> All this day light air from the South  
and fine weather Lat Obs 29.27  
Long Chron 73.10 Bar 30.30

1<sup>st</sup> Feb'y

All this day Calm & hot a Ship  
& Bark in Comp for the last two  
days Lat Obs 28.13 Long Chron 72.45  
Bar 30.30 to 30.35

2<sup>nd</sup> Feb'y

All this day Calm and very hot weather  
at 8 Am Exchanged signals with  
Ship Plato of Boston for N Orleans  
Lat by Obs 28.14 Long by Chron 72.39  
Barometer 30.30

3<sup>rd</sup>

All this day Calm with light air  
at intervals Several vessels in  
Comp Lat by Obs 27.42 Long Chron 72.35

# Boston towards New Orleans

4<sup>th</sup> Feb 7 All this day light variable air  
and calm at intervals by changed signs  
with Bark Indiana several vessels  
in Comp standing to S Westward  
Lat by Obs 27<sup>o</sup> 10 Long by Chron 52<sup>o</sup> 53  
Barometer 30<sup>o</sup> 25

5<sup>th</sup> Feb 7 Commences light breezes from Eastward  
and pleasant weather. Middle part wind  
inclines Southerly. Ends strong breezes South to  
to S W and squally. Lat by Obs 26<sup>o</sup> 32 North  
Long by Chron 55<sup>o</sup> 18 West Bar 30<sup>o</sup> 15

6<sup>th</sup> Feb 7 Commences strong breezes from S W  
at 12 mid-night tacked to S E  
at 5 Am the wind hauled to N W  
at 9 Am made the N E point Abaco  
bearing West 11 miles Ends light  
breezes from the North & fine weather  
Lat by Obs 26<sup>o</sup> 07 Long by Chron 56<sup>o</sup> 48  
Barometer 30<sup>o</sup> 10

7<sup>th</sup> Feb 7 All this day brisk breezes from the North  
to N W and fine weather at 6 P.M. Abaco  
Light bore North per Comp about 3 miles  
steered N  $\frac{3}{4}$  W per Comp at 1 Am the  
Berry Isles bore West tacked to N E by E  
at 4 o'clock tacked to West & to N E  
9 to West  $\frac{1}{2}$  N & West by N

Journal of Ship Amulet from

7<sup>th</sup> July At 12 noon Great stirrup Key bore South  
per Comp dist 6 miles stered S W N  
8<sup>th</sup>

Strong breeze from North and pleasant  
at 2 Am sounded in 12 pattions on the  
N W Corner of the Bahama Bank  
at 3 Am Great Isaac bore East per  
Comp at 11.30 do passed Sun Key light

9<sup>th</sup>  
Fine breeze from the East and pleasant  
at 6 PM passed Orange Keys  
stered S W N per Comp at 8  
Am made Dead mens keys at 12  
noon Double head shot keys light  
bore S W by N N W

10<sup>th</sup> Barometer 30.20

light airs from Eastward at 1 Am. D. Fl.  
Shot key light bore N E 1/2 E dist 10  
miles stered S W per Comp  
& made the light on Mona Key bearing S E  
& the pine of Matanzas bearing S W by E  
Barometer 30.10



# Boston towards New Orleans

11<sup>th</sup> Feb Commences fine breeze from the Eastward and pleasant at 4 Am the More Castle Light bore S by W per Comp dist 18 or 20 miles. latter part Calm Lat by Obs 23<sup>o</sup> 33 Long Chron 82<sup>o</sup> 24  
21 days out from Boston & have reefed but once and then for only two hours. Barometer 30<sup>o</sup> 00.

12<sup>th</sup> Feb Commences light air from S W hauled round to North & East at 6 P.M. fine breeze S E & pleasant steered N W by W at 4 Am wind South at 6 took in studding sails & royals wind S W at 9<sup>o</sup> 30 do furled topgallants & double reef'd top-sails appearance of the wind coming out N W at 10 do strong gales N W and much rain Eads strong gales N W and squally at intervals Lat by Obs 24<sup>o</sup> 55 Long Chron 83<sup>o</sup> 42 Barometer 29<sup>o</sup> 90

Journal of Ship Annet from

13<sup>th</sup> Feb<sup>y</sup> Commences strong gales from N W  
and cloudy. saw several Ship's outward  
bound. at 6.30 P.M. passed a Ship  
standing to S W & showing a light.  
at 8 do tacked to west. at 4 Am  
more moderate with a heavy head see  
set single reef'd top-sails. at 6 do  
made all sail by the wind. at 9  
do passed Brig George Shattuck. &  
Ship Lockinvar we signalized bound  
out. Lat by Obs 25.20 Long Chron 84.01  
Barometer 30.20. Ends pleasant.

14<sup>th</sup> Feb<sup>y</sup> All this day fine breeze from Northward  
and pleasant weather. a Ship on our  
lee beam standing to N W saw several  
outward bound Ship's. Lat by Obs 26.20  
Long by Chron 86.32 Barometer 30.20 to 30.25

15<sup>th</sup> Feb<sup>y</sup> All this day light baffling winds &  
pleasant weather a Ship in Company  
to leeward, standing to Westward.  
Lat by Obs 26.24 Long Chron 86.34  
Barometer 30.20 to 30.10

# Boston towards New Orleans

16<sup>th</sup> Feb<sup>y</sup> Commences with light buffing winds  
from North & N E at 10 Am squally  
tacked to N N W at 11 do took in  
royals at 12 noon furled topgallant-sails  
No Obs Lat by Acct 26<sup>o</sup> 55 Long do 87<sup>o</sup> 00  
Barometer 30<sup>o</sup> 10 to 29<sup>o</sup> 90

17<sup>th</sup> Commences squally & much rain,  
at 3 P M spoke Ship Plate of Boston  
for N Orleans, at 4 do double reef'd  
top-sails through the night much  
rain at 3 Am furled Jib & spanker  
at 6 Am set Jib & spanker at 10 do  
clears up set single reef'd top-sails  
& topgallants saw our outward bound  
ship at 12. Lat by Obs 27<sup>o</sup> 21 Long Chro<sup>m</sup> <sup>87<sup>o</sup> 43</sup>  
Bar 29<sup>o</sup> 80 to 30<sup>o</sup> 00

18<sup>th</sup> Commences strong breezes & clear, at 10 P M  
wind inclines to westward & increases, at  
12 Midnight furled topgallant-tails & outer  
Jib, at 2 Am blowing heavy double reef'd top-sails  
furled Jib & spanker at 3 do carried away  
Main-top-sail, Jib, in the slings sent it  
down got another up double reef'd the sail  
& set it, set the Mainsail, Ends strong  
gales from the northward & cold weather  
Lat by Obs 27<sup>o</sup> 49 Long Chro<sup>m</sup> 87<sup>o</sup> 29. Bar. 30<sup>o</sup> 00 to 30<sup>o</sup> 15

## Ship Amulet from Boston

19<sup>th</sup>

Commences strong gales from N N W  
and cloudy. at 6 Am more moderate  
made all sail by the wind heading  
N W by W. Ends fine breeze from the N E  
and pleasant weather.

20<sup>th</sup>

fine breeze from N E and pleasant at  
12 mid night made the N E pass light  
bearing N B, W per Comp dist 4 miles.  
at 1 South point light bore N S W.  
at 4 Am the S W pass light bore N B, W  
per Comp dist 3 miles. spoke tow-boat  
Louisville. at 5 Am pilot came on board.  
at 10 o'clock the tow-boat Louis Philippe  
towed us in over the bar without  
touching. anchored at 11 Am. at 3 P.M.  
the tow-boat took us on the larboard side  
& Ship Diadem of N York on the starboard  
side & proceeded up river. this day  
being 36 hours long Ends my list of  
nautical time & my journal also.  
for I am much fatigued & very  
sleepy

towards New Orleans Feb 7 1849

Mercentile & Marine Magazine and

Nautical record. London July 1859

South Entrance of the Straits of Gaspar.

'Capt Bell of the Ship "Land of Cakes", reports having passed 26<sup>th</sup> Jan 1859 when near the South end of Gaspar Straits Fairlie Rocks N 8 about 6 miles distant ~~about 6 miles~~ a sunken Bark her three masts standing, about half of her lower masts above water evidently not long in that position this would seem to indicate a shoal where from 9 to 10 fathoms are now marked on the Chart"

I see by reference to my chart it is the same spot where the Hippogrippe struck on the morning of the 29<sup>th</sup> Oct 1858

Anthony Flower

Address the Editor of the Mercentile & Marine Magazine 114 Fenchurch Street London.

March 11<sup>th</sup> 1862

Telegraph at Belle Isle France connecting  
with all Europe. Signal Pole Communicat<sup>g</sup>  
with vessels approaching the Coast,  
using Moryette & Reynolds. Code signals  
Pole on high ground left side of entrance  
to Port Pallais opposite the Fort.  
this information published at the  
request of President of Chamber Commerce  
Nantes

March 11<sup>th</sup> 1864  
Dear Mother  
I received your kind letter  
of the 7<sup>th</sup> and was glad to  
hear from you. I am well  
at present and hope these  
few lines will find you  
the same. I have not much  
news to write at present.  
I am your affectionate son  
John Smith



March 29<sup>th</sup> 1868

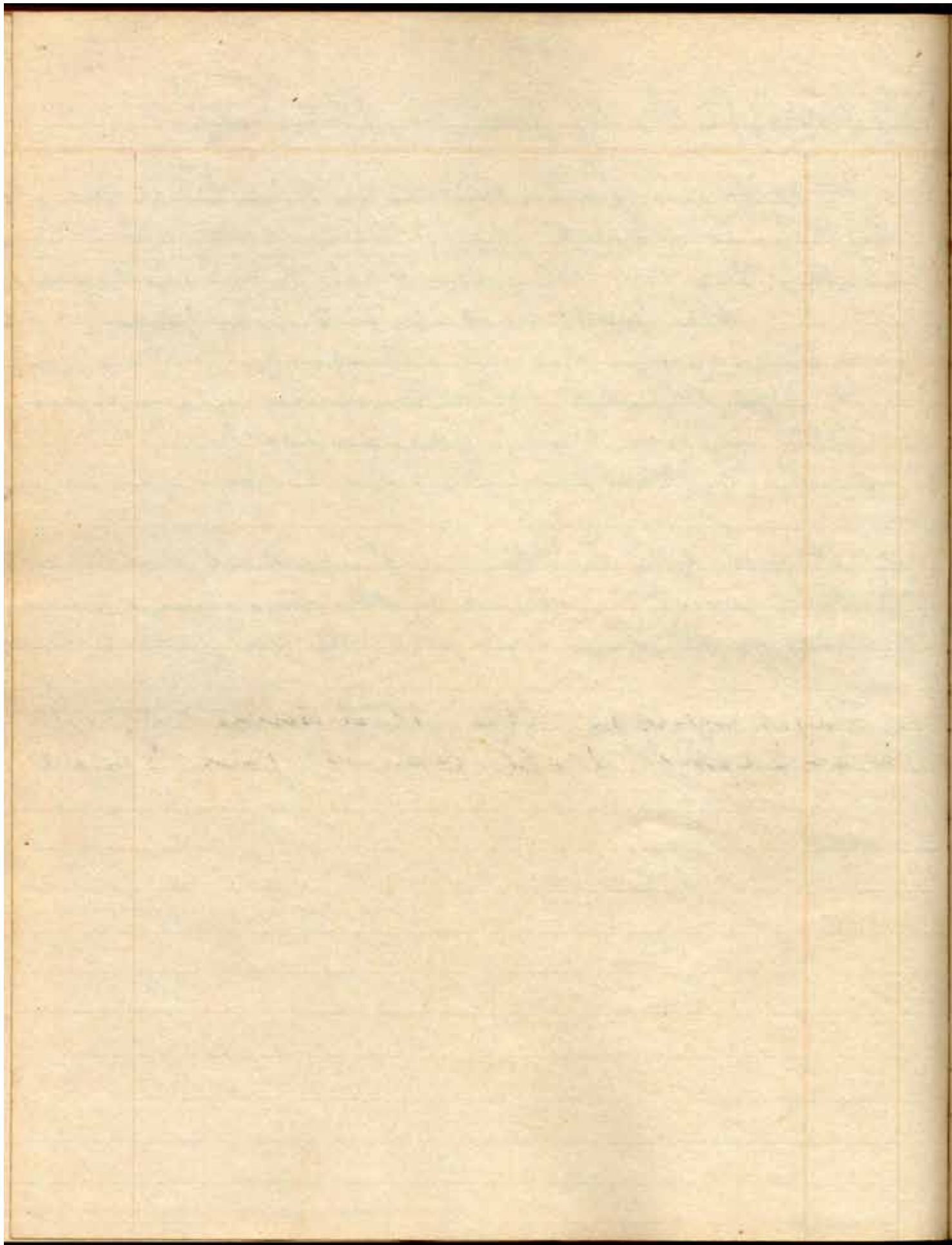
Ship Bogriffe You top Gallant Stunsail

Length 20ft inner Leach, 7 cloths in head 5 inch gore,  
11 Cloths in foot 5 inch gore, 4 Leach cloths 6ft 2 inches  
in length. Dec 1859 the first had 3 4 7 inch gore  
the last had 5 7 8 inch gore

Ship Bogriffe You top Stunsail  
Length 20ft 6 inches 10 cloths in head 5 inch gore  
14 Cloths in foot 7 inch gore on foot  
Leach cloths 6ft gore. fits well.

Add the foot gore to the inner Leach, and subtract  
the head gore, then divide by the number of go-  
ing cloths in the Leach will give the gore per each cloth

Ship Bogriffe top Stunsail  
Aries 22ft Head 5 inch foot 7 inch



# Making fire Works

No 1 Rockets 16 oz Saltpetre  
4 oz Brimstone  
7 do charcoal

to be pounded in a mortar separate and sifted through a piece of bunting, then mix the ingredients in a bowl with a little Rum or Brandy, or mix them dry at pleasure. And fill in a paper mould, 5 inches long about the size of an ordinary broom stick. to make stars fill a point an inch and half long with coarsely powdered Brimstone, white vitrol and Salpêtre, and place on the upper end of rocket, to make the fuse soak the wick in a little wet powder or ingredients for Rocket. in filling a rocket put a small stick in the center of it and fill around it withdraw the stick when loaded and insert the match.

*[Faint, illegible handwritten text, likely bleed-through from the reverse side of the page.]*

Hippogriffe Main top Gallows Stunsail 1852

Length of inner leech 21 feet 7 cloths in head 3 inch  
gore 11 cloths in foot 4 inch gore. Cloth 22 in wide

Main

Royal Stunsail Length of inner leech 18 ft  
6 cloths in head 3 inch gore 10 cloths in foot  
3 inch gore Cloth 22 inches wide

May 1858

Fore top main & Staysail 9 cloths in foot 5 inch  
gore at the tack 8 inches at the clew.  
Stay gore 8 ft 8 inches cloth 24 inches wide

June  
1859

Main Staysail (Old Sail),  
14 1/2 cloths in head 11 ft 9 inches hoist  
1 and 3/4 gore cloths on each back  
about 4 inch roach on the clew cloth  
July 1859 Hippogriffe Lower stunsail  
22 feet hoist not including tabling  
18 cloths hump canvas

Date	Description	Amount
1845 Jan 1	Balance forward	100.00
1845 Jan 15	Cash on hand	50.00
1845 Feb 1	Cash on hand	25.00
1845 Feb 15	Cash on hand	15.00
1845 Mar 1	Cash on hand	10.00
1845 Mar 15	Cash on hand	5.00
1845 Apr 1	Cash on hand	2.50
1845 Apr 15	Cash on hand	1.25
1845 May 1	Cash on hand	0.62
1845 May 15	Cash on hand	0.31
1845 Jun 1	Cash on hand	0.16
1845 Jun 15	Cash on hand	0.08
1845 Jul 1	Cash on hand	0.04
1845 Jul 15	Cash on hand	0.02
1845 Aug 1	Cash on hand	0.01

Aug 28<sup>th</sup> 1850

Amulet Main top gallants on'l

10 cloths in the head 22 inches Wide  
two middle cloths 12 ft 3 inches long  
no reach 14 cloths in the foot 1 ft 6 inches  
reach thus, 0<sup>1</sup> 1<sup>2</sup> 11<sup>3</sup> 21<sup>4</sup> 39<sup>5</sup> 47<sup>6</sup> 57<sup>7</sup>

Feb 28<sup>th</sup> 1851

Amulets Main top gallants standing on'l

length or hoist 20 ft including tabling 6 cloths in the  
head 22 inches wide 3 inch gore 10 cloths in the  
foot " " " 6 inch gore add the foot gore  
to the hoist or inner leech & subtract the head  
gore gives 5 ft 10 1/2 inches gore on each cloth  
for the leech

Sept 8<sup>th</sup> 1852

Heppogruppe Main top atonsant.

length of inner leech 22 feet. 11 cloths in the head  
22 inches wide 15 cloths in foot 22 inches wide  
foot gore 5 inches. head gore 4 inches

List of Heppogruppes Can ruff

No 3	2 Bolts
No 4	3 do
No 6	4 do
No 9	3 do
No 1 Bolt & three remnant	

Amulets top most Stuchings out Aug 20<sup>th</sup> 1850

Length or hoist 31 feet <sup>including tabling</sup> over each extreme  
& cloths in head 22 inches wide 4 inches gore  
13 cloths in foot " " " 6 " "  
Add the foot gore to the over each 31 feet  
and subtract the head gore ~~gore~~ from  
the sum and divide by the number of  
governing cloths in the each which is 6 -  
gives 8 ft 11  $\frac{1}{4}$  inches per each cloth gore each  
takes 835 yards

Top gallant Stuchings out Aug 20<sup>th</sup> 1850  
Length or hoist 20 ft including tabling  
6 cloths in the head 22 inches wide 2  $\frac{1}{2}$  inch  
gore 10 cloths in foot 22 " " 3 inch gore  
Add the foot gore which is 50 inches to the  
length 20 ft & subtract the head gore 15  
inches gives 5 ft 9 inches gore on Each each  
Cloth takes 60 yards

ought to be 19 ft hoist 3 inches gore on the head  
& 7 inches gore on the foot with 9 cloths in the part



26<sup>th</sup> Aug 1810

Amulets Main top mast Studsail

Length or hoist 31 ft including tabling,  
which is 4 inches all around,

9 cloths in the head 22 inches wide 4 inches gore  
14 " " " foot " " " 6 " "

add the foot gore to the inner Leach makes 38 ft  
subtract the head gore leaves 36 ft

Divide by the number of goring cloths in the  
outer Leach which is 5 gives 7 ft gore on  
each cloth. Roping the outer Leach take in  
a little more cloth than you do in the rest  
of the sail, takes 140 yards Canvas  
Date

the length of the Main top mast from  
brounds to heel is 33 ft

Afterwards gave it 9 inches more gore on the  
head and it set well, but it ought to have  
a foot or 18 inches more hoist

If your topsail hoists check up take the length of  
the top mast from brounds to heel for the hoist  
or inner Cloth and 5 inch gore in the head 6  
in the foot and it will set as well as you could  
wish to see a sail

## Length & proportions of spars for Merchant Ships

Main Mast Equal to two & a half times the Ship's beam,

Fore Mast Equal to eight ninths of the Main Mast,

Mizzen Mast Equal to five sixths of the Main Mast.

Bowsprit two thirds of the Main Mast & one third of which ought to be in-board.

Main-topmast three fifths of the Main Mast,

Main-top-gallant-mast, one half of the Main topmast exclusive of the pole which ought to be one half the length of the top-gallant-mast or a little longer.

Fore-topmast three fifths of the fore mast,

Fore-top-gallant-mast one half the length of the fore top mast exclusive of the pole which is half the length of the top-gallant-mast

Mizzen-topmast three fifths of the Mizzen Mast

Mizzen-top-gallant-mast one half the length of the Mizzen top mast and the pole half the length of the top-gallant-mast.

St'ch-boom the length of the Bowsprit two thirds of which is rigged without the Bowsprit Cap.

Main-yard twice the Ship's extreme Breadth

Main-top-sail-yard two thirds of Main yard

Main-top-gallant-yard two thirds of Main top-sail yard

Fore yard seven Eighths of Main yard.

Fore top-sail yard two thirds of Fore yard

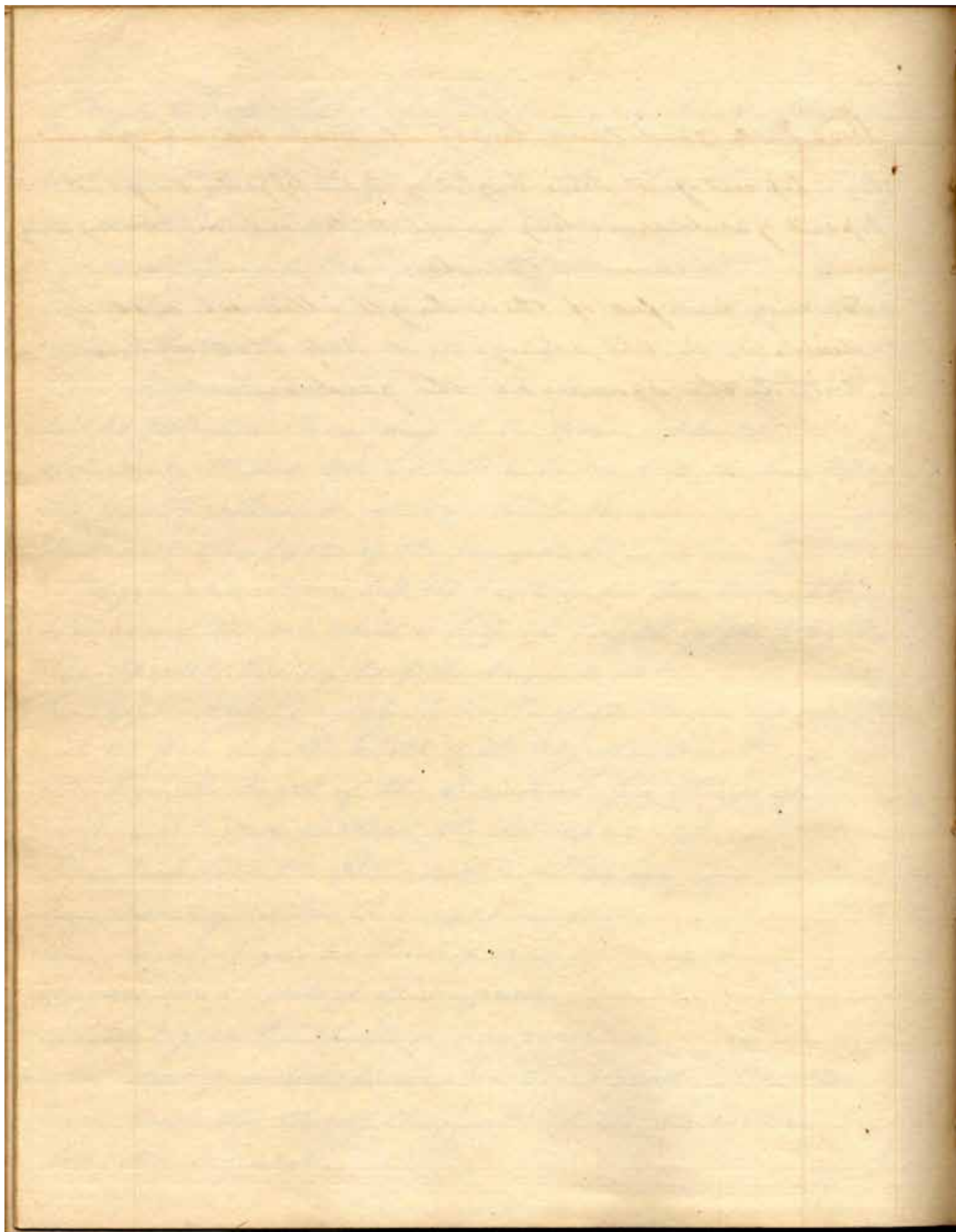
Fore top-gallant yard two thirds of Fore top-sail yard

Royal yards two thirds the length of the respective top-gallant yards.

Cross Jack yard same length of Main topsail yard  
Mizen top sail yard same length of Main topgallant yard  
Topsail yard arms long enough to haul out close reef being

### Diameter Yards

For every four feet of their length allow one inch of  
diameter in the slings and half that diameter  
within the squares at the yard-arm



The California Emigrant.  
June-Oh Susannah.

I come from Salem City,  
With my wash-bowl on my knee,  
I'm going to California,  
The gold dust far to see.  
It rained all night the day I left,  
The weather it was dry,  
The sun so hot I froze to death—  
Oh! brothers! don't you cry:

Oh California!

That's the land for me  
I'm going to Sacramento  
With my wash-bowl on my knee,  
I jumped aboard the 'Liza' ship,  
And travelled on the sea,  
And every time I thought of home,  
I wish'd it was n't me,  
The vessel reared like any horse,  
That had of oats a wealth,  
It found it couldn't throw me, so  
I thought I'd throw myself!

Oh California &c

over

I thought of all the pleasant times,  
We've had together here;  
I thought I orb to cry a bit,  
But could'nt find a tear.  
The pilot bread was in my mouth,  
The gold dust in my eye,  
And though I'm going far away,  
Dear Brother's dont you cry!  
oh Californian &c.

I soon shall be in Francisco,  
And then I'll look all round,  
And when I see the gold lumps there,  
I'll pick them off the ground.  
I'll scrape the mountain's clean, my boys,  
I'll drain the rivers dry,  
A "pocket full of rocks" bring home  
So Brother's dont you cry.  
oh Californian

That's the land for me  
I'm going to sacramento  
With my wash-bowl on my knee

## Painting Amulet

100 Cwt of white lead for Bulwarks inside  
houses Boats &c & half a small <sup>bucket</sup> bag of yellow paint  
mixed with a little green or blue at pleasure.  
75 lbs for spars Mast heads &c. 25 lbs ports outside.  
200 cwt for between decks.. & 25 Galls Oil. it took  
400 cwt for the between decks two Coats & bulwarks  
inside one Coat on a voyage to Bonaire,  
100 Cwt was not enough we had to mix again  
it will take 150 lbs not including the white,  
to do all including water-ways hatch-  
combing gratings &c which ought to be lead Colour  
62 small kegs is enough providing it is not very  
bare if so you may mix 6 kegs very safely

## To Measure for a Topsail

Measure from the hounds to the heel of the topmast for the middle cloth or hoist. take the whole length of the topsail yard from which deduct 8 ft take the whole length of the Main yard & deduct about 6 ft. these measures are for a sail cut square on the foot. if you intend roaching the sail on the foot cut the middle cloth as many feet or inches less than the measure from hounds to heel. as you intend the roach shall be and find the roach in the same manner as for the main sail

## To Cut the cloths

cut as many cloths as your topsail yard requires square on the head & foot if you please. take half the difference between the width of the sail on the topsail yard & lower yard. straighten the selvage of this last cut cloth. set off on a straight line from the lower end of this cloth. in a line with the foot, this half difference & mark it. place the selvage of your Canvas one inch over the selvage of this last cloth. run your tared line from the upper end on the outer selvage to the mark denoting the half difference between the head & foot. cut through this mark & you will have the lark gore.



All the other cloths for the gore on the leech  
may be cut by this cloth. or you can find  
the gore as in the 7th or any other part.

### Rule for Reefs

take the middle of the sail from  
top sail to lower yards for reef tackle  
cringle. put the close reef 16 inches above  
A. or you may put the reefs in at your  
pleasure.

### Top gall onto air

measure from the hounds to the heel of the  
top gallant mast for the hoist or middle  
cloth. take the whole length of top gallant  
yard. from which deduct 3 feet take the whole  
length of top sail yard from which deduct 6  
feet. if you intend reaching this sail on the  
foot cut the middle cloth as much shorter  
as you intend the reach shall be. govern  
yourself as respects reaching as per directions  
(Mainsail) and for the gore by the top sail.

Gore it some say 1 foot or 18 inches but not  
too much that is the best advice I can give  
you

## Sail making Making Jib

the after leech of this sail is 42 ft & has 12 cloths  
in the foot the foot gore in the whole sail is 6 ft.

to find the foot gore on each cloth.

gore on the foot is 6 ft

divide by the number of cloths on the foot  $\frac{6 \text{ ft}}{12} = 5 \frac{1}{11}$  inches cloth  
5  $\frac{1}{11}$  inches gore on each

To find the stay gore

add the length of the after leech ——— 42 ft  
to the gore on the foot ——— 6 ft

48 ft

Divide by the number of cloths on foot  $\frac{48 \text{ ft}}{12} = 4 \frac{4}{11}$  inches  
4 ft 4 inches  $\frac{4}{11}$

to Cut the first Cloth presuming the Canvas is square on the end. set off  $5 \frac{1}{11}$  inches on either selvage of your Canvas and mark it. run a piece of tared twine across the Canvas diagonally to the extreme point of the opposite selvage & cut it through the mark and you will have the foot gore for the first cloth. Measure up on the shorter selvage 42 feet & mark it. from this mark set off 4 ft 4 inches  $\frac{4}{11}$  down towards the foot and mark it. take a thread from this last mark to the opposite selvage, mark it. run your twine from this last mark to the mark denoting the length of this first cloth so as to leave the mark on the Canvas cut through this mark

and you will have the stay gore for the first  
& second cloths. turn your Cannap so as to bring  
the longer selvage even with the shorter selvage  
of the first cloth measure down by this cloth  
for the length of the second cloth & mark it.  
take a thread to the opposite selvage & mark it.  
set off 6-6 $\frac{1}{2}$  inches mark it, run your twine from  
this mark to the mark denoting the length of  
the second cloth on the opposite selvage. Cut  
through from mark to mark and you will  
have the foot gore for the 2<sup>nd</sup> and 3<sup>rd</sup> cloths.  
turn your Cannap so as to bring the shorter  
selvage to longer on the foot of the 2<sup>nd</sup> cloth  
& Continue turning, measuring, and cutting;  
until you have all the cloths required.  
observing to number each cloth as they are  
cut to prevent mistakes in cutting

## Main's ail

To measure for a Main's ail, take the the whole length of the Main yard from which deduct from 5 to 8 ft for the width on the yard. Measure from <sup>the most</sup> upper part of the Main yard as far down as you wish the foot to come for the middle cloth. Give one cloth on each leech from head to due, and give the foot 3 ft roach from the middle cloth to each due. you may have one two or four square cloths in the middle of the sail only be careful to increase the roach proportionably on each cloth as you gain towards the clues

To Cut the Canvas for this sail; you may cut the two middle cloths square on the foot if you please. & roach out towards the clues increasing proportionably so as to give the foot a fair roach. this 0 1 inch 2 inches 3 4 &c to each cloth. in roaching a square sail, every cloth should increase in length on the outer selvage, so as to give the foot a fair roach to find this roach for each cloth, set down the number of inches you intend roaching the sail. let us suppose that 3 ft or 36 inches were required in a sail that has 18 whole cloths in the foot as we have two square cloths in the ~~foot~~ middle we have but 8 cloths on each side that require roaching

Then suppose we say for the first cloth 0  
 second cloth 1 inch third cloth 2 inches &c  
 until we have the whole number of cloths in  
 one half the sail Thus

First trial for 9 cloths for 36 inches roach	Second trial 36 inches	third trial 36 inches
0	0	0.
2	0	1
3	1	2
4	2	3
5	3	4
6	4	5
7	5	6
8	6	7
9	7	8
<hr/> 44 inches too much	<hr/> 28 inches not enough	<hr/> 36 inches roach required

Note

You may be ever so particular in cutting  
 your sail, if it is not properly roped it  
 will not set well

I have had two sails spoiled by roping  
 this voyage and had the rope to take off  
 again

Amulet's Sails

Topmast studdingsail 29 ft long not including  
the tabling cloth 22 inches wide & cloths  
in the head 2 inch gore 12 cloths on the  
foot 6 inches gore. not gore enough on  
head Nor foot ought to be 4 & 6 inches

Main royal yard 23 ft long 17 inches round

Fore top gallant sail cloth 24 inches wide 14 cloths  
on the head making 28 feet. Length of <sup>two</sup> middle  
cloths 17 ft 6 inches. 2 feet roach on the foot.

and 12 cloths on the foot 24 inches wide making  
36 feet 2 middle cloths no roach. 1<sup>st</sup> 1 inch. 2<sup>nd</sup> 1-1/4.

3<sup>d</sup> 2-1/2. 4<sup>th</sup> 2 5/8. 5<sup>th</sup> 3 3/4. 6<sup>th</sup> 3 6/8. 7<sup>th</sup> 3 1/2. 8<sup>th</sup> 5 inches

so that each cloth is roached 4/5ths of an inch more

Main top Gall studdingsail 85 yds No 10 Cotton Carriage

Main royal 65 yds do do do

Miz top Gallant sail 65 yds No 8 do do

Fore top mast studdingsail 135 yds No 8 do do

Lower studdingsail 150 yds No 9 do do

top mast Lower studdingsail & Miz top 3 parts 2 1/4 in rope

2 inch rope for royals & top gallant studdingsails is

none to large



Received of A. Howes  
\$ 15 Dollars for towing  
Ship Amulet

J. Lummiskey

List Gleppasrippes Cannage

No 3 - 2 Bolts  
No 4 - 3 Bolts  
No 6 - 4 Bolts  
No 9 = 3 Bolts & a part of one

188	41
8	4
144	164



